

**DESCRIPTION**

**TO DECLARATION OF  
CONDOMINIUM**

**EXHIBIT "A"**

LEGAL DESCRIPTION OF CONDOMINIUM

The East 200 feet of Lot 2, lying South of Gulf Beach Highway, also known as Lots 1S and 2S, of an unrecorded plat, Deed Book 536, Page 279, Section 24, Township 3 South, Range 31 West, Escambia County, Florida.

The West one hundred (100) feet of the East three hundred (300) feet of that part of Government Lot numbered two (2) lying South of Gulf Beach Highway in Section 24, Township 3 South, Range 31 West, Escambia County, Florida.



GENERAL NOTES WITH RESPECT TO THE PLOT PLAN  
AND FLOOR PLANS MATERIAL AND DRAWINGS FOR  
SNUG HARBOUR, A CONDOMINIUM

(1) The plans have been prepared by Gregory R. Uzdevenes Architect, PA, 918 East Cervantes Street, Pensacola, Florida 32501.

(2) All improvements depicted on the attached plans are proposed and construction is not substantially completed.

(3) The fee simple estate in the real property and all of the depicted improvements are part of the common elements, except for the following:

(a) The 86 individual condominium units.

(b) The 20 covered parking spaces which are limited common elements.

(c) Each unit contains balcony areas contiguous to and serving only that unit, and heating and air conditioning equipment serving only that unit, which items are limited common elements.

(d) The 86 storage areas 101 through PH13, inclusive, depicted on the drawing of the ground floor plan, are limited common elements.

F:\users\KB\CONDO\Snug Harbour\CondoDocs\Final as Recorded\General Notes to plot plan.wpd  
January 4, 2007

**Narrative Description**  
**SNUG HARBOUR, A CONDOMINIUM**

Snug Harbour, a Condominium, contains one high-rise building comprised of a ground floor for parking and storage, and a first floor which contains the mechanical room, community room and seven (7) condominium units. There will be eight (8) units on each of Floors 2, 3, 4, 5, 6, 7, 8, 9, and 10; four (4) units on Floor 11; and three (3) units on the penthouse floor (PH). The Condominium contains a total of eighty-six (86) residential units. There are fifty-nine (59) A units that contain three bedrooms and two bathrooms, with approximately 1624 square feet of living area; twenty (20) B units that contain three bedrooms and three bathrooms, with approximately 1769 square feet of living area; two (2) C units that contain three bedrooms and two bathrooms, with approximately 2051 square feet of living area; two (2) D units that contain three bedrooms and three bathrooms, with approximately 2373 square feet of living area; two (2) E units that contain three bedrooms and three bathrooms, with approximately 2193 square feet of living area; and one (1) F unit that contains three bedrooms and two bathrooms, with approximately 1550 square feet of living area.

The common elements in the Condominium include all lands and improvements thereon which are not included in the units and which are not designated as limited common elements.

Reference should be made to the site plan, floor plans, and building elevations set forth in this exhibit. The construction is not complete, but upon completion of the building, this Declaration shall be amended to show the certificate of a surveyor authorized to practice in this state certifying that the construction of the improvements is substantially complete so that the material, together with the provisions of this Declaration describing the condominium property, constitute an accurate representation of the location and dimensions of the improvements and that the identification, location and dimensions of the common elements, and limited common elements, appurtenant to each unit, can be identified from these materials.

The unit numbers, and the numbers of bathrooms and bedrooms in each unit are set forth below as follows:

Unit No.	Unit Designation	# of Bedrooms	# of Baths	Unit No.	Unit Designation	# of Bedrooms	# of Baths
101	B	3	3	102	A	3	2
104	A	3	2	105	A	3	2
106	A	3	2	107	A	3	2
108	B	3	3				
201	B	3	3	202	A	3	2
203	A	3	2	204	A	3	2
205	A	3	2	206	A	3	2
207	A	3	2	208	B	3	3
301	B	3	3	302	A	3	2
303	A	3	2	304	A	3	2
305	A	3	2	306	A	3	2
307	A	3	2	308	B	3	3
401	B	3	3	402	A	3	2
403	A	3	2	404	A	3	2
405	A	3	2	406	A	3	2
407	A	3	2	408	B	3	3
501	B	3	3	502	A	3	2
503	A	3	2	504	A	3	2
505	A	3	2	506	A	3	2
507	A	3	2	508	B	3	3

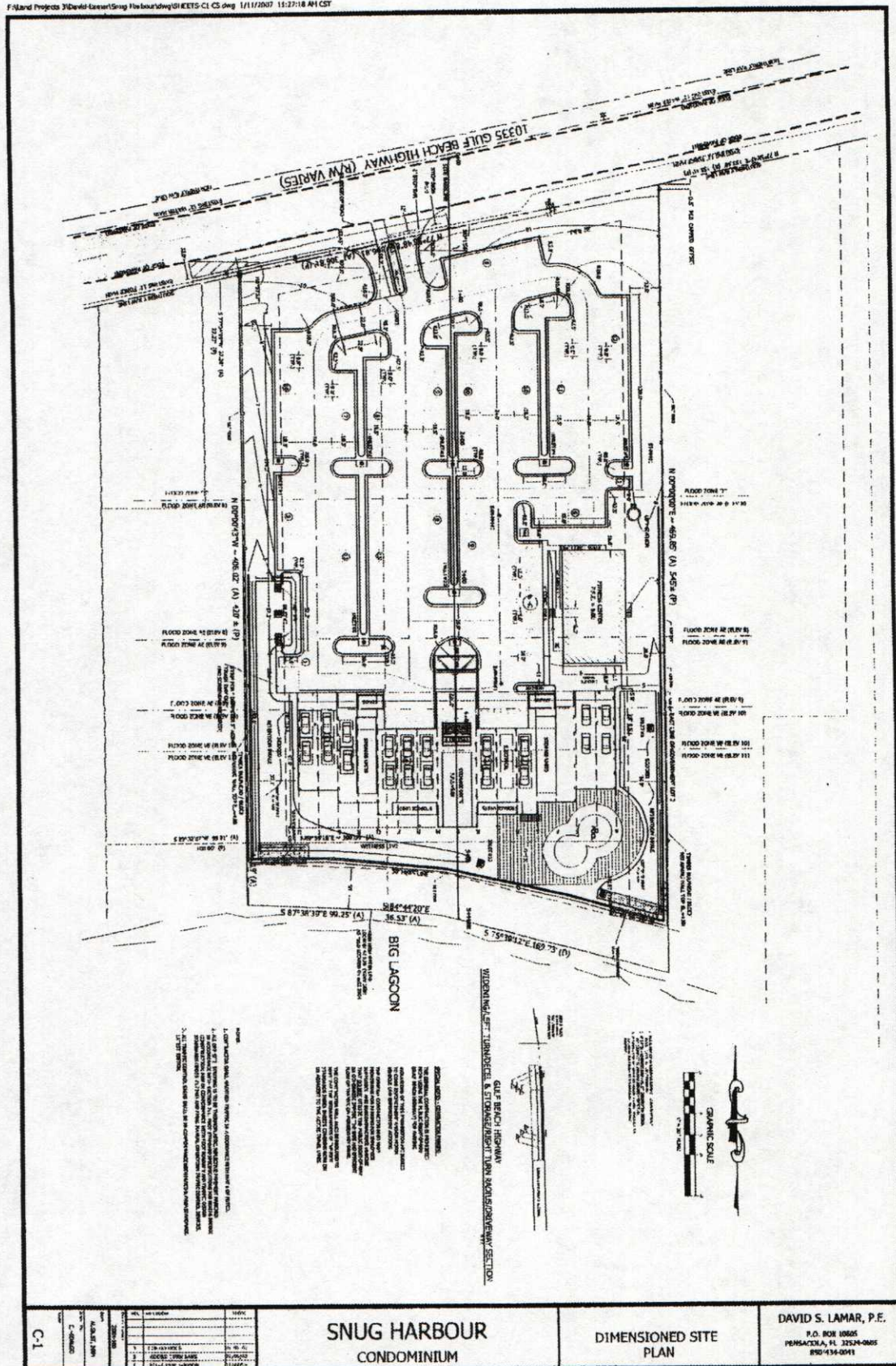


Unit No.	Unit Designation	# of Bedrooms	# of Baths	Unit No.	Unit Designation	# of Bedrooms	# of Baths
601	B	3	3	602	A	3	2
603	A	3	2	604	A	3	2
605	A	3	2	606	A	3	2
607	A	3	2	608	B	3	3
701	B	3	3	702	A	3	2
703	A	3	2	704	A	3	2
705	A	3	2	706	A	3	2
707	A	3	2	708	B	3	3
801	B	3	3	802	A	3	2
803	A	3	2	804	A	3	2
805	A	3	2	806	A	3	2
807	A	3	2	808	B	3	3
901	B	3	3	902	A	3	2
903	A	3	2	904	A	3	2
905	A	3	2	906	A	3	2
907	A	3	2	908	B	3	3
1001	B	3	3	1002	A	3	2
1003	A	3	2	1004	A	3	2
1005	A	3	2	1006	A	3	2
1007	A	3	2	1008	B	3	3
1101	C	3	2	1102	D	3	3
1103	D	3	3	1104	C	3	2
PH1	E	3	3	PH2	F	3	2
PH3	E	3	3				

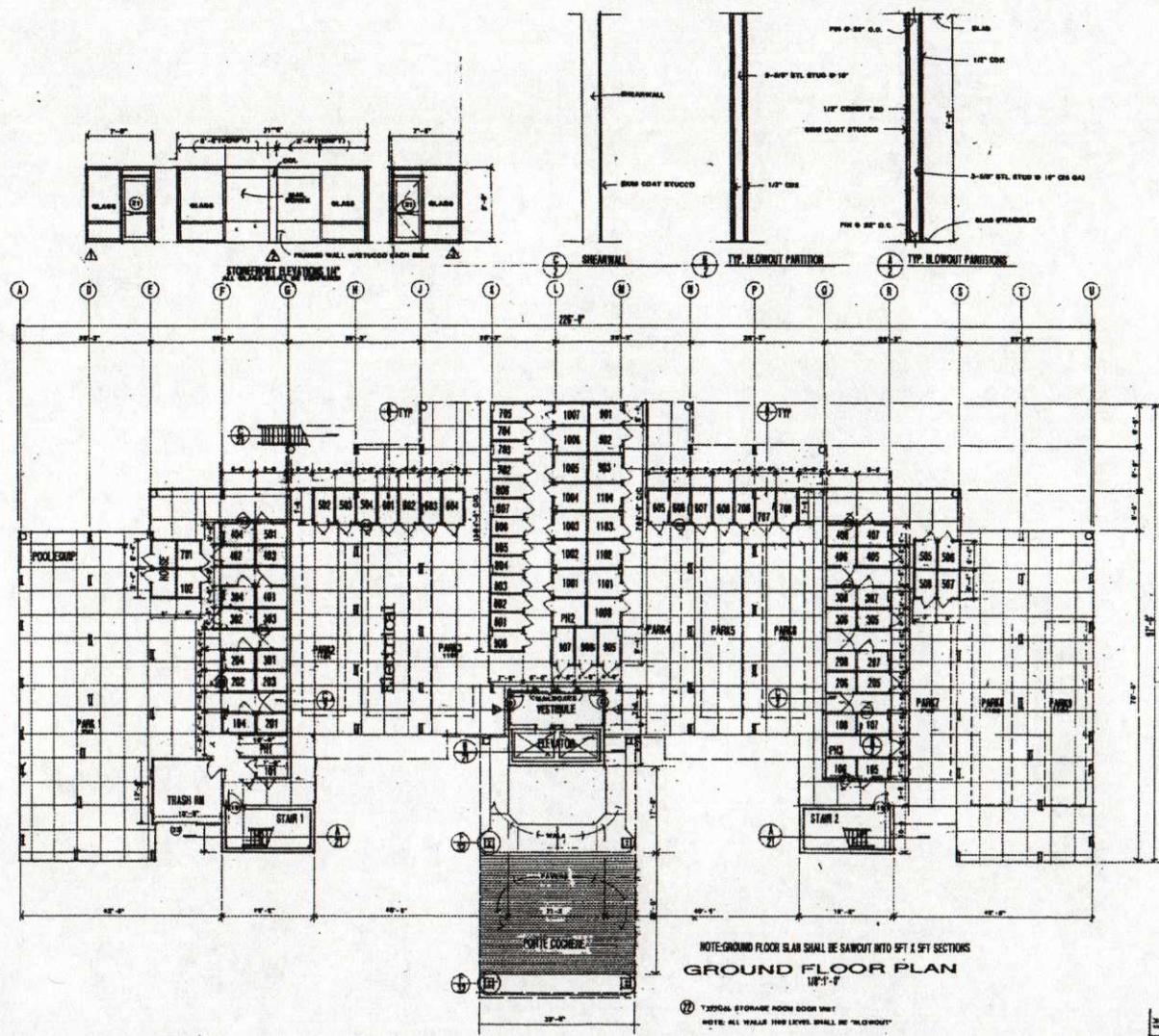
F:\users\KB\CONDO\Snug Harbour\CondoDocs\Final as Recorded\Narrative Description.wpd  
January 4, 2007



F:\land Projects\3\Devil\Exam\Snug Harbour\dwg\01\KETS-CL-01.dwg 1/11/2007 11:27:18 AM CST







FLA REG. 0000

DESIGN & CONSTRUCTION: P.L.C.  
 1000 N. W. 10th St., Suite 100  
 Fort Lauderdale, FL 33304  
 TEL: 561-488-4444

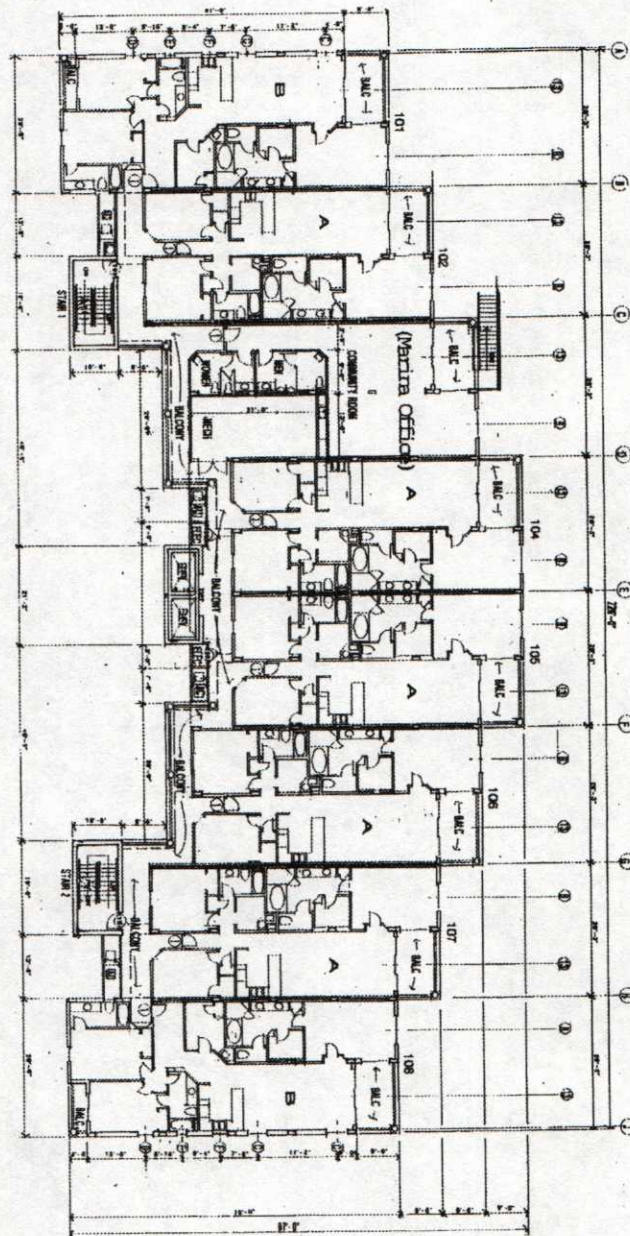
**SONS OF ARROWS**  
 ARCHITECTS

DATE: 04/08/04  
 DRAWING NO.: 0404  
 REVISION:

**A2**  
 SHEET NO.



1ST FLOOR PLAN



A3  
SHEET NO.

DATE: 04/04  
JOB NO. 104  
REVISED

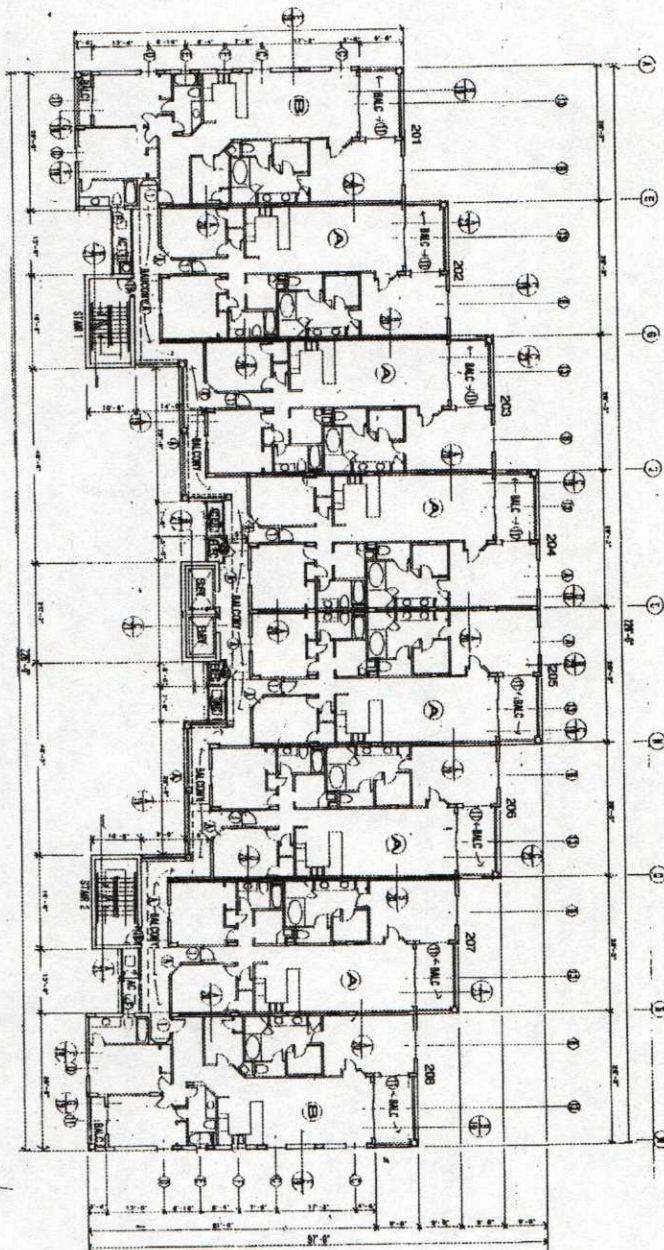
SWING HARBOR  
1035 GUY RICH HIGHWAY

GREGORY A. GONZALEZ, ARCHITECT, P.A.  
1035 GUY RICH HIGHWAY, P.O. BOX 104  
094-02-004 FAX 809-428-1044

PLAN NO.



2ND FLOOR PLAN



A-4  
SHEET 14

DATE: 5/11/04  
JOB NO: 1591  
REVISED

STUDIO CITY  
1000 GUY BEECH ROAD

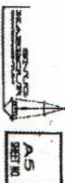
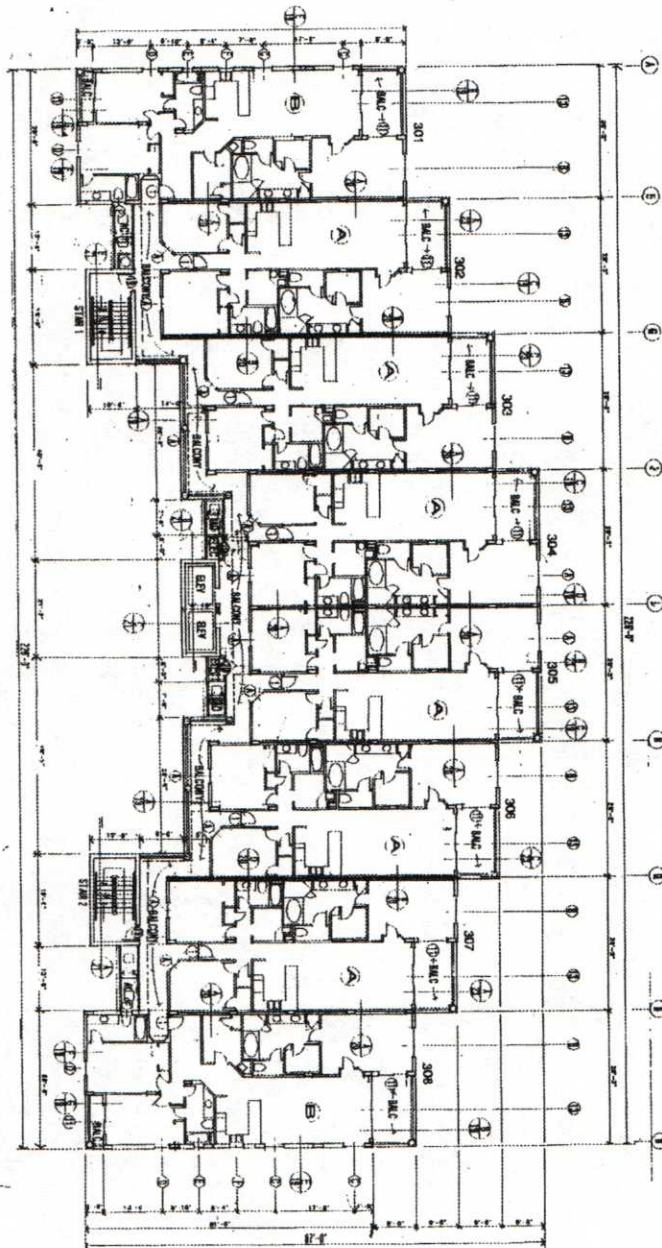
SPENCER & SUTHERLAND ARCHITECT, P.A.  
400 E. CENTRAL ST., PENSACOLA, FLA.  
904-432-8001 FAX 904-432-0906

FILE NO. 1591



3RD FLOOR PLAN

DATE: 10/1/94  
 DRAWN BY: J. H. HARRIS  
 CHECKED BY: J. H. HARRIS  
 SCALE: 1/8" = 1'-0"



DATE: 10/1/94  
 JOB NO. 6081  
 REVISION

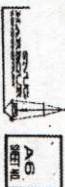
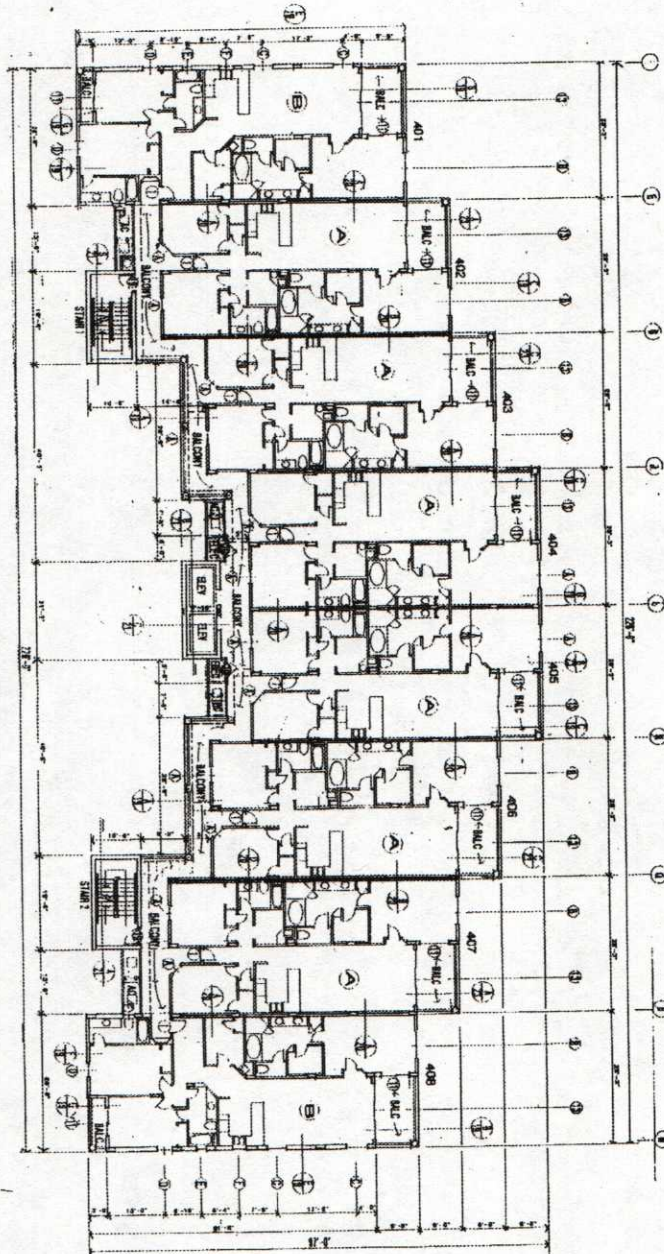
SNUG HARBOUR  
 1035 GAY BEACH HIGHWAY

DESIGNED & DRAWN BY: J. H. HARRIS  
 854-435-5554 FAX: 854-435-5554

PLA. 10/1/94



4TH FLOOR PLAN



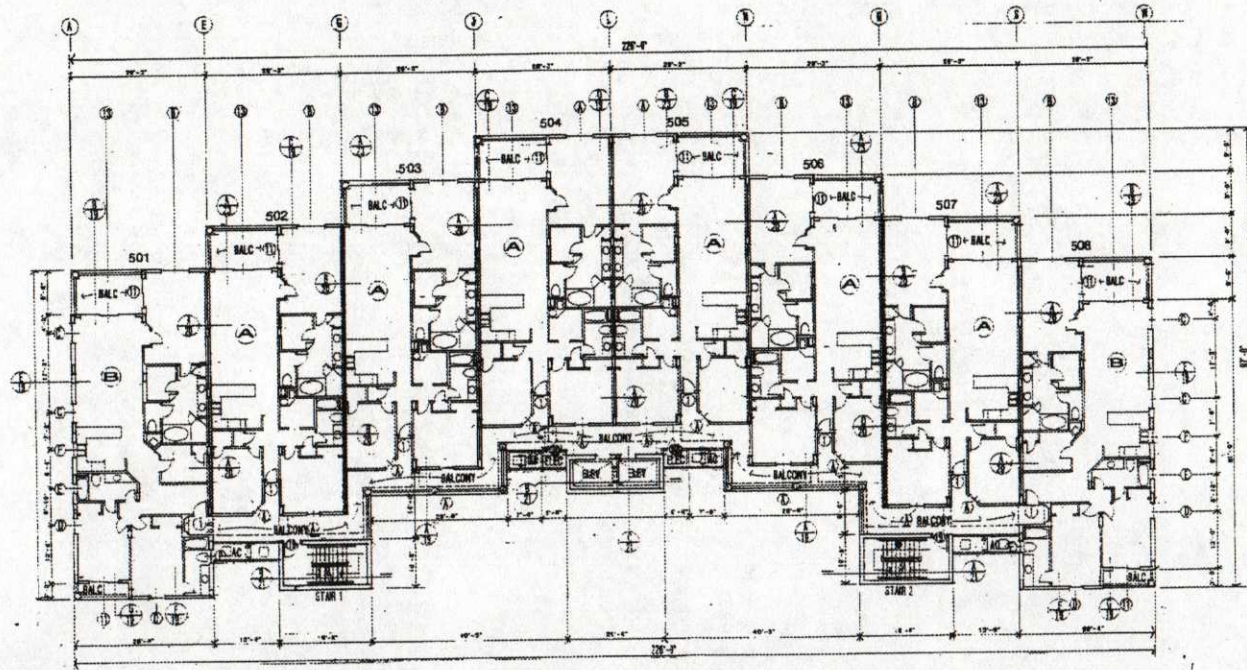
DATE: 06/10/04  
JEN NO. 0004  
REVISED

SNUG HARBOR  
1035 GOLF BEACH HIGHWAY

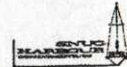
GREENTREE & ASSOCIATES, ARCHITECTS, P.A.  
ONE E. CONANT ST., THUNDERBOLT, PA.  
800-432-0004 FAX 908-438-0004

ALL REVISIONS





LIVING AREA 13,280 SF  
PRIVATE BALCONIES 1,000 SF  
COMMON AREA 100 SF  
**5TH FLOOR PLAN**  
1/8" = 1'-0"



A7  
SHEET NO.

DATE: 04/04/00  
BY: J. L. LEE  
CHECKED: J. L. LEE

**SNUC HARBOURS**  
1000 10TH AVENUE  
SUITE 100  
DENVER, CO 80202

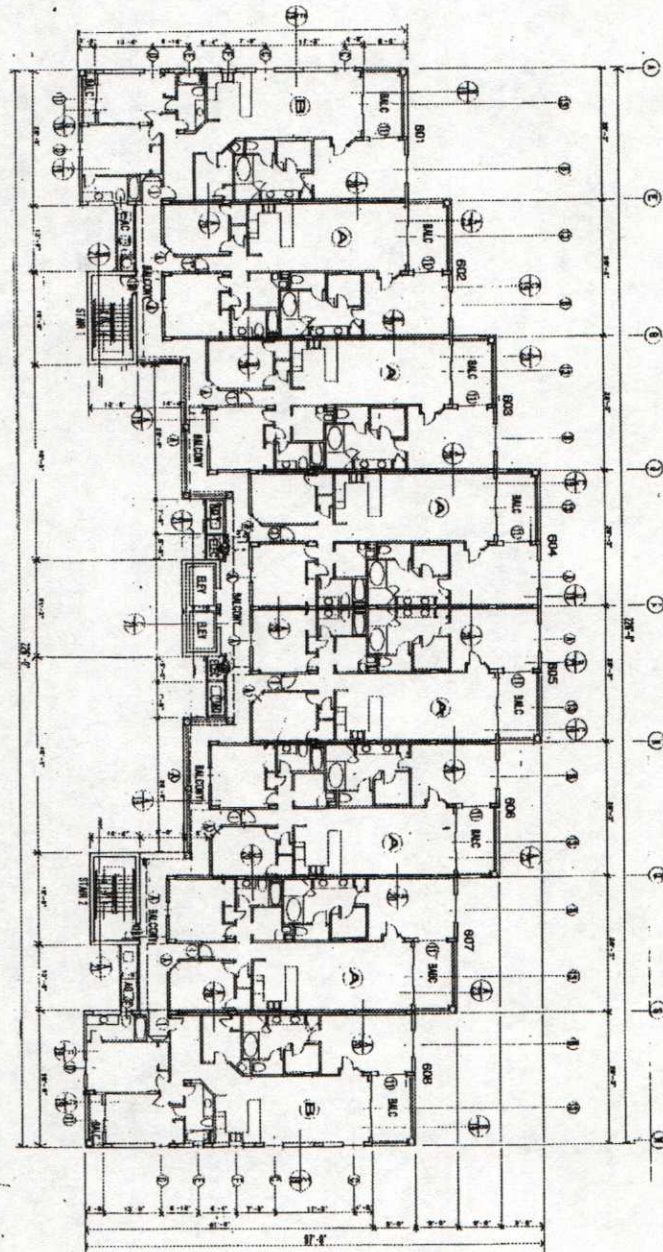
OFFICE: 303.733.1111  
FAX: 303.733.1112  
WWW.SNUC.COM

FLA REG. 0000000



6TH FLOOR PLAN

DATE: 01/14/04  
 JOB NO. 0404  
 REVISION



AS  
 REVISION

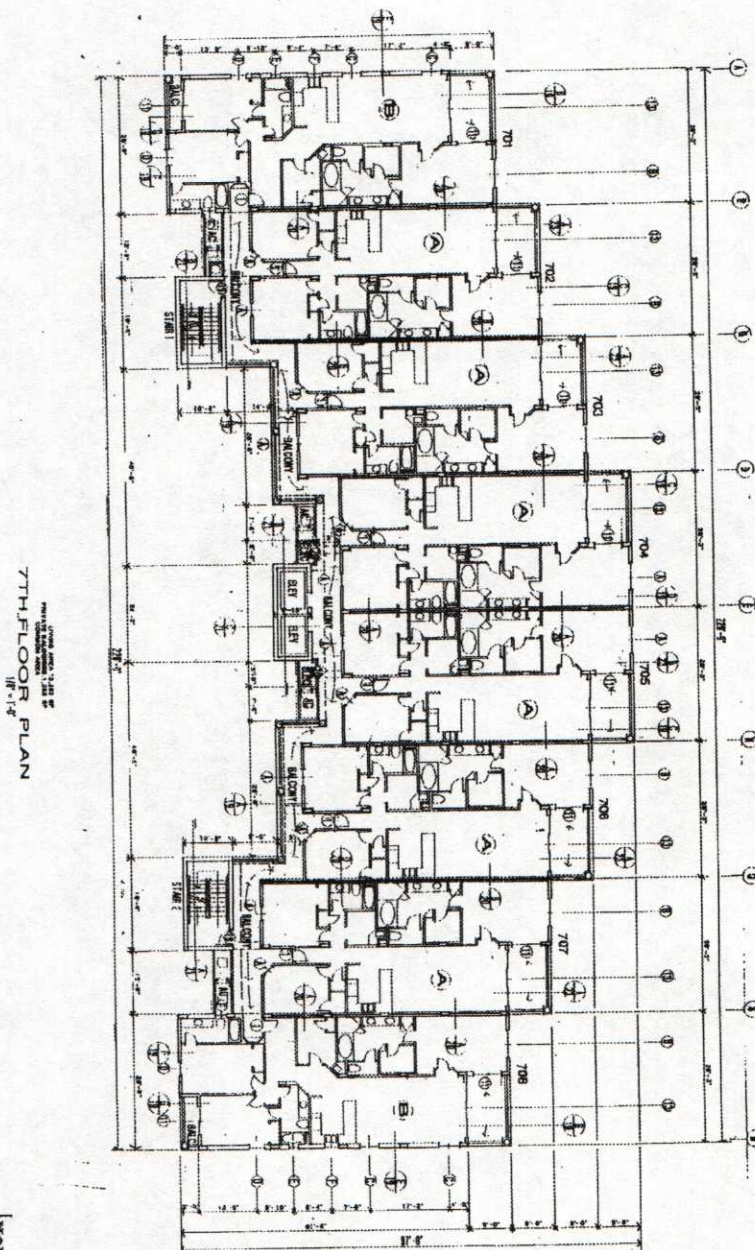
DATE: 01/14/04  
 JOB NO. 0404  
 REVISION

SONS OF HORRORS  
 FROM GALT BEACH MOUNTAIN

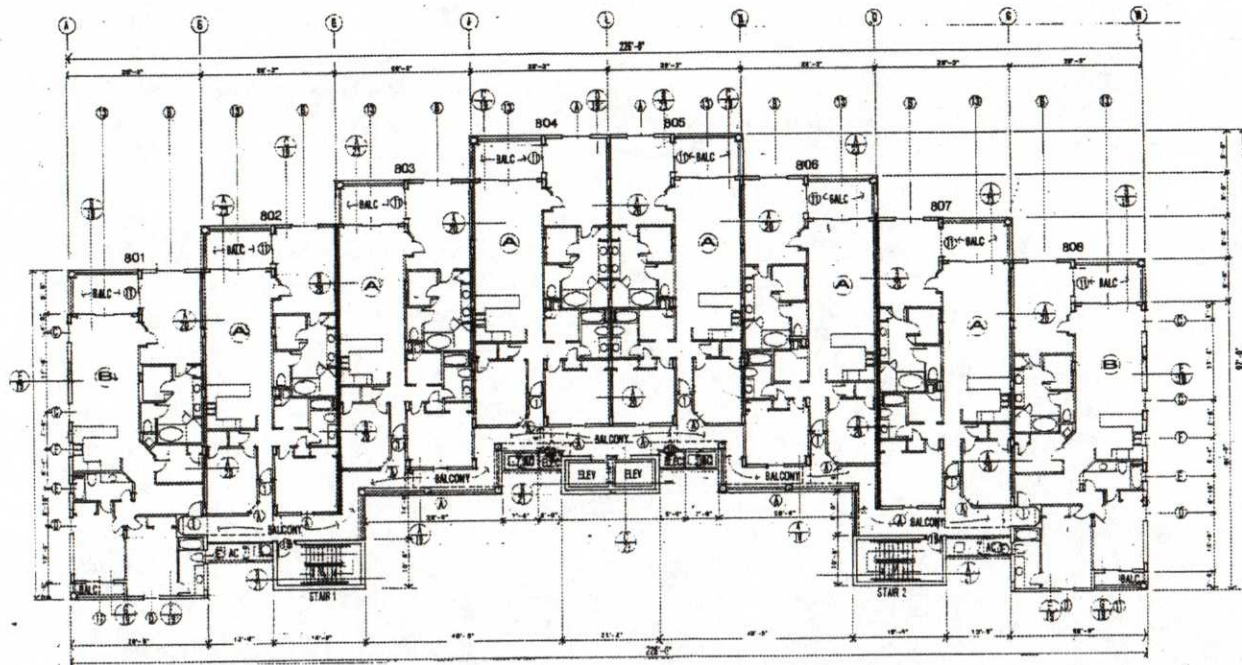
OFFICE & SHOWROOM, JACKSONVILLE, FL  
 910 E. BAYVIEW BL., JACKSONVILLE, FL  
 904-222-2221 FAX 904-222-2221

FL 001









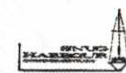
LIVING AREA 13,200 SF  
PRIVATE BALCONIES 1,000 SF  
COMMON AREA 1,000 SF  
**8TH FLOOR PLAN**  
1/8" = 1'-0"

FLA REG. NO.

OFFICIAL ARCHITECT  
800-12-1234  
111-111-1111

SONG HARRIS  
ARCHITECTS

DATE: 10/10/00  
BY: JH  
REVISED

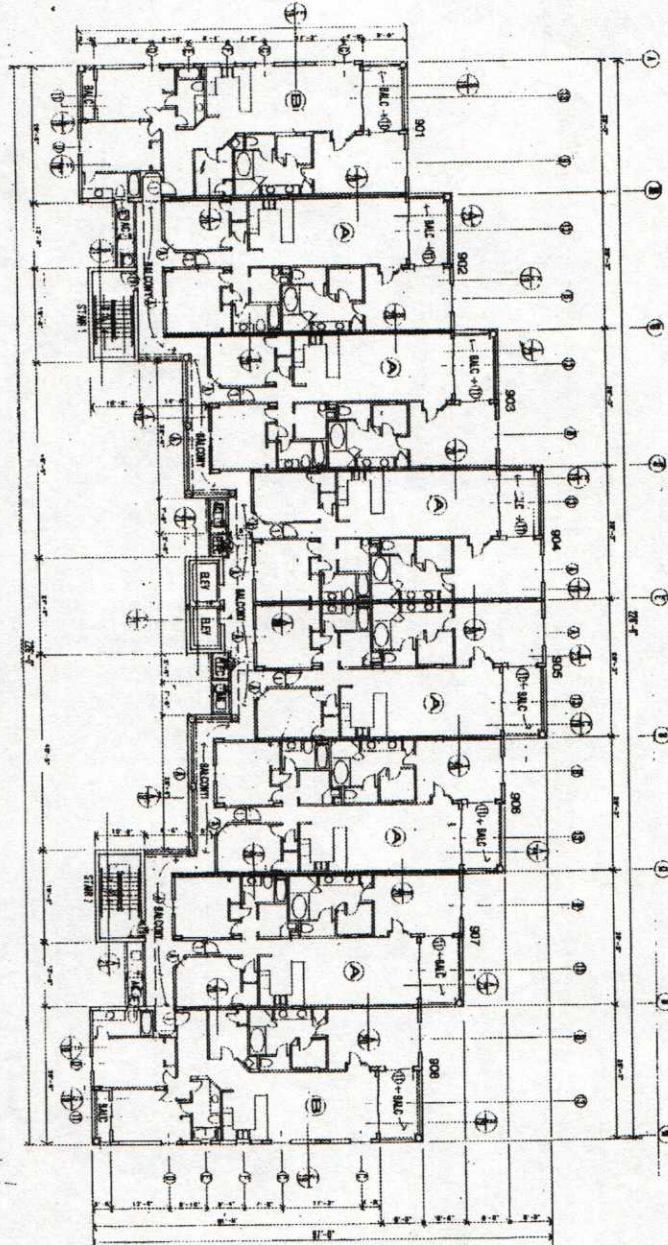


**A10**  
SHEET NO.



5TH FLOOR PLAN

1/2" = 1'-0" (AS SHOWN)  
 1/8" = 1'-0" (AS SHOWN)  
 1/4" = 1'-0" (AS SHOWN)  
 1/16" = 1'-0" (AS SHOWN)



A11  
 REVISED

DATE: 08/04/04  
 JOB NO: 0204  
 REVISED

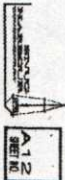
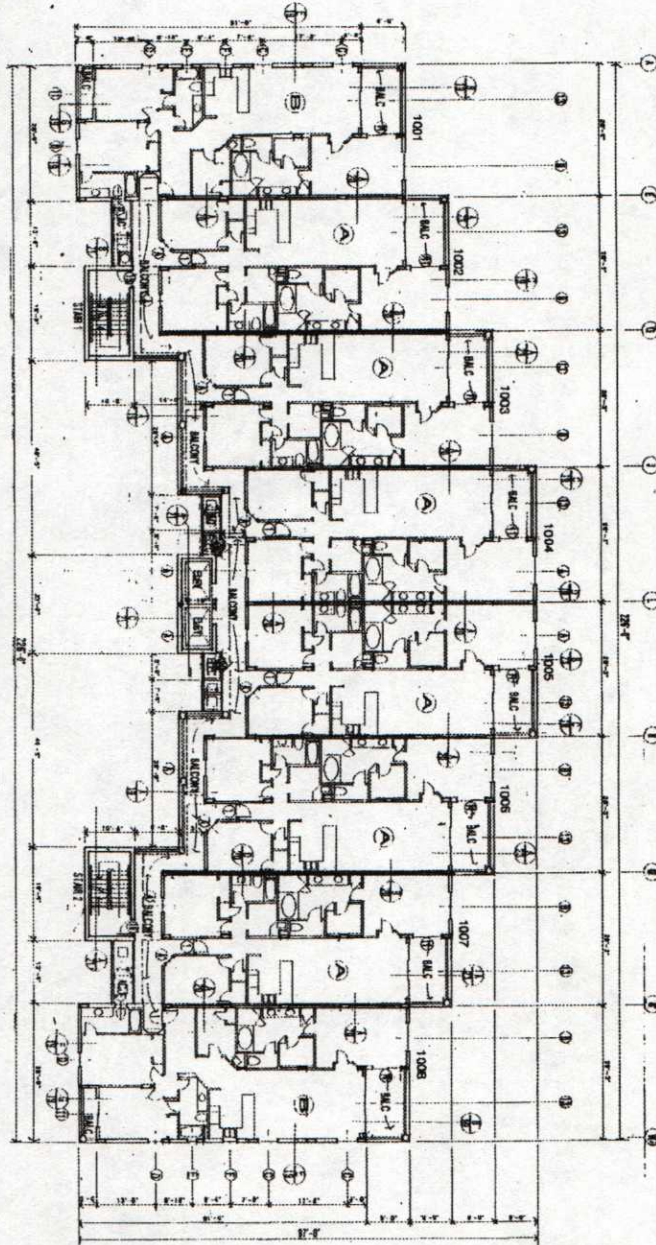
SNUG HARBOUR  
 CONDOMINIUMS  
 1035 GOLF BEACH BOULEVARD

GREYSON & GILLESPIE ARCHITECT, P.A.  
 801 E. CENTRAL AVENUE, SUITE 100, WILMINGTON, DE 19801  
 302-432-3004 FAX 302-432-4000

1/4" = 1'-0"



10TH FLOOR PLAN



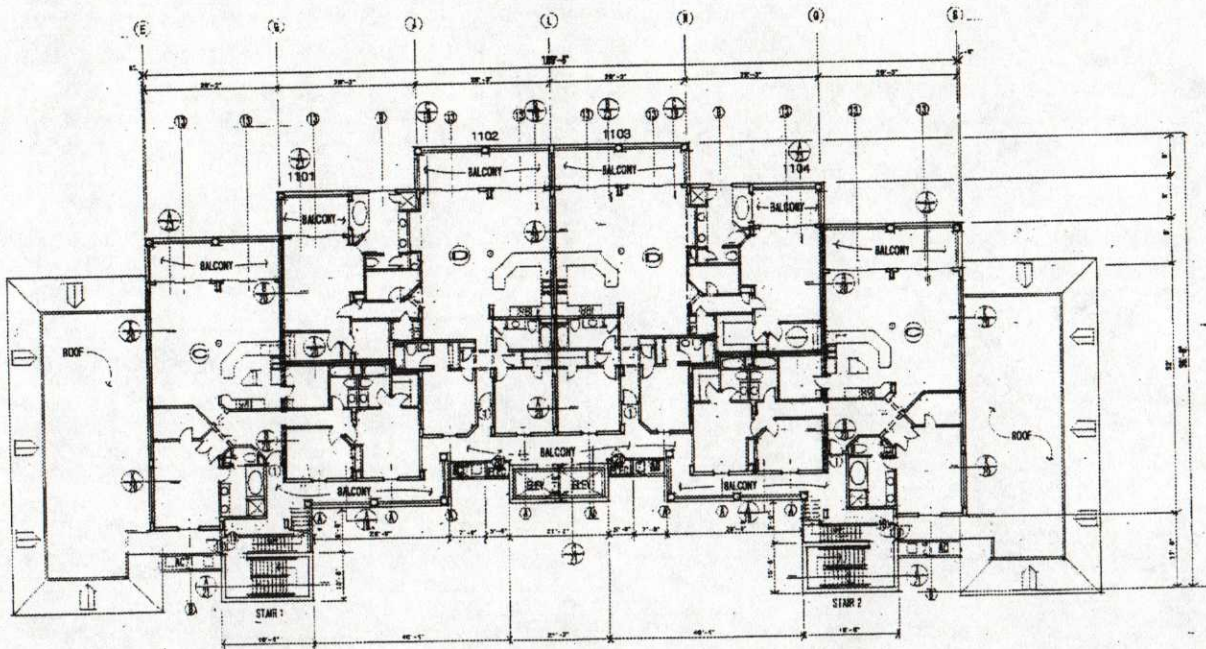
DATE: 08/08/04  
JOB NO: 0394  
REVISED

SNUG HARBOR  
CONDOMINIUMS  
1000 GOLF BEACH ROAD

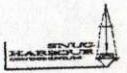
OFFICE: 4000 WEST 10TH AVE  
SUITE 200, MIAMI, FL 33150  
TEL: 305-422-4304 FAX: 305-422-4305

FILE NO: 0394





11TH FLOOR PLAN 1/8"=1'-0"



A13  
FLA REG. 0001

DATE: JANUARY 2000  
BY: J. M. HENSEL

SNUG HARBOR  
CORPORATION

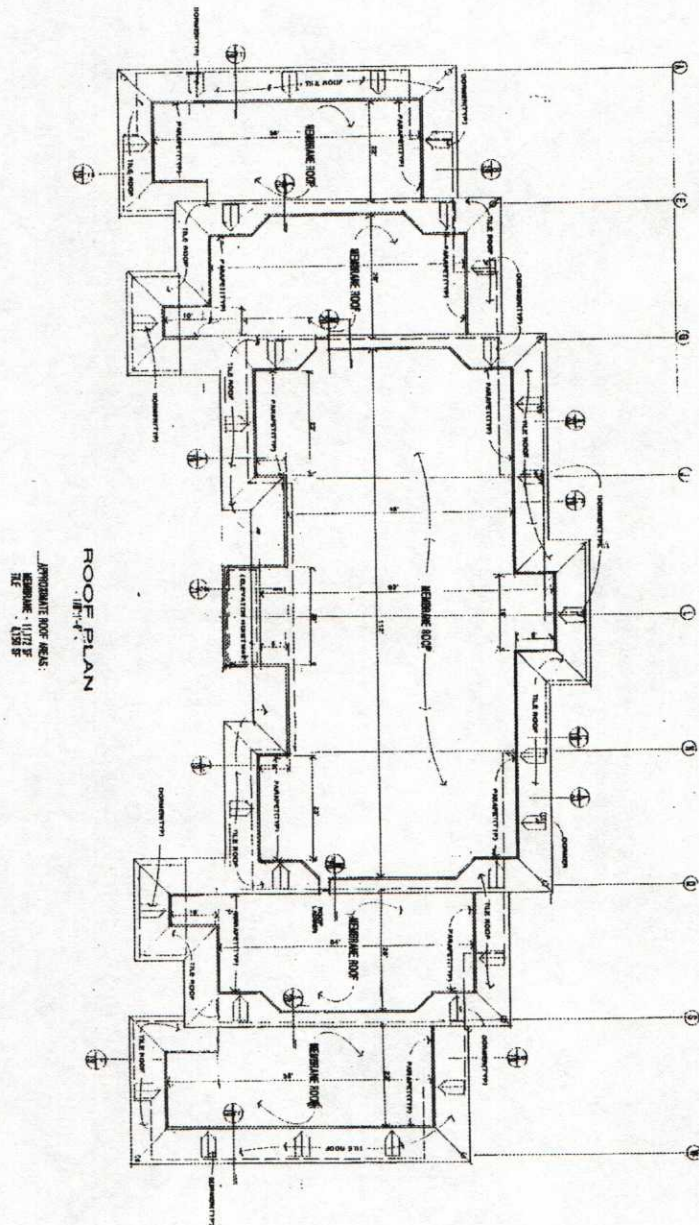
THE CHARTERED SURVEYOR  
OF FLORIDA  
NO. 100-100-100

FLA REG. 0001









DATE: 08/08/01  
JOB NO. 6081  
REVISED

DATE: 08/08/01  
JOB NO. 6081  
REVISED

SMITH HARRIS  
1033 GULF BEACH HIGHWAY

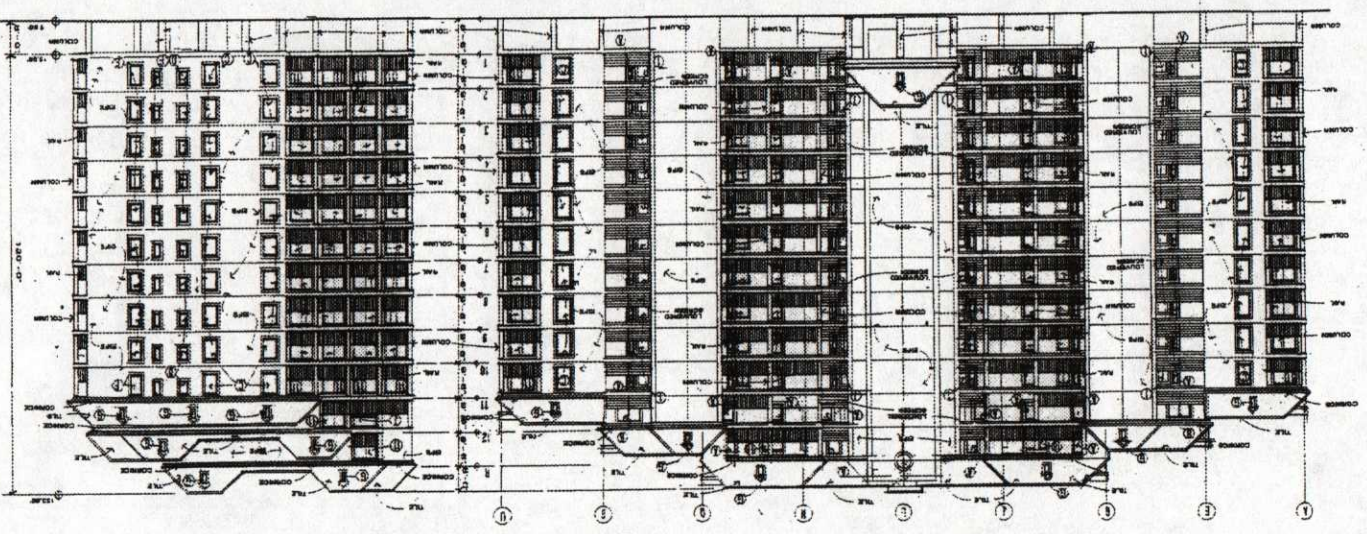
GREGORY S. LINDENBERG, ARCHITECT, P.A.  
100 E. CENTRALES ST., PENSACOLA, FLA.  
904-432-5001 FAX 904-432-1998

DATE: 08/08/01



ELEVATIONS - 107'-10"

NORTH



SHEET NO  
A16

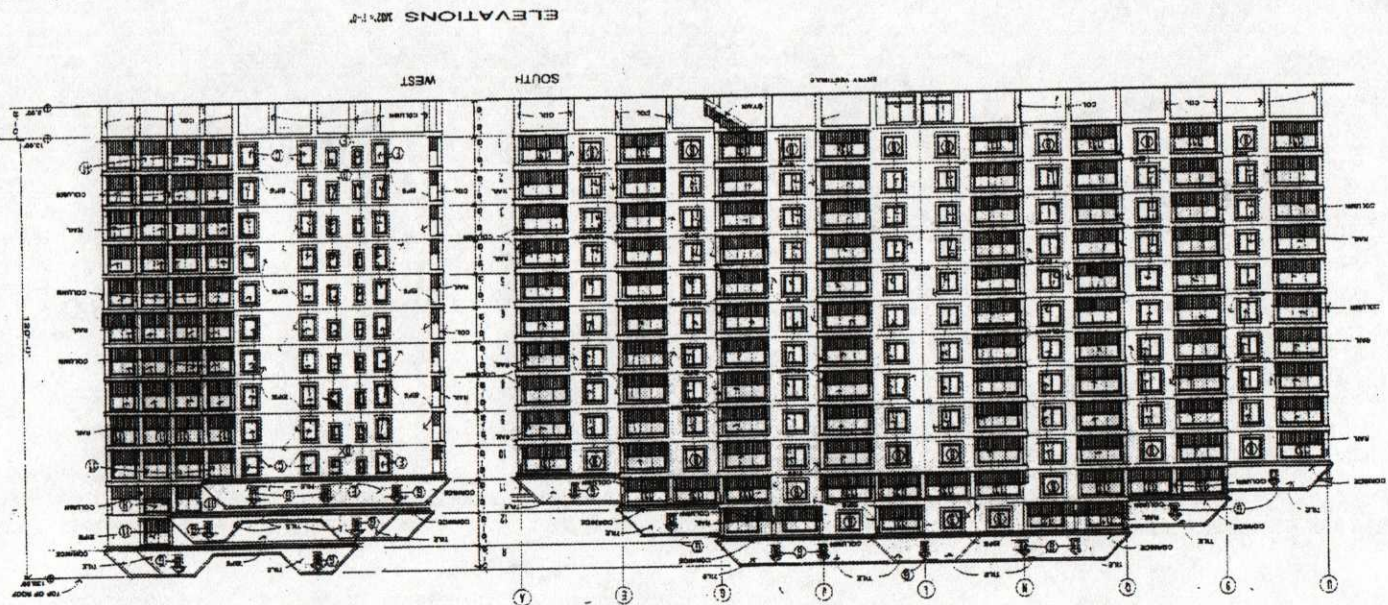
DATE: 10/10/11  
BY: J. H. H. H.  
REVISED

SONG HARRIS  
1000 10TH AVENUE  
NEW YORK, NY 10018

REVISIONS  
NO. OF REV. DATE  
1 11/15/11

ALL REVISIONS  
TO BE MADE  
BY THE ARCHITECT





ELEVATIONS AND FLOOR PLAN

WEST SOUTH EAST

SHEET NO. A-17

DATE: 10/10/1961  
BY: [Signature]

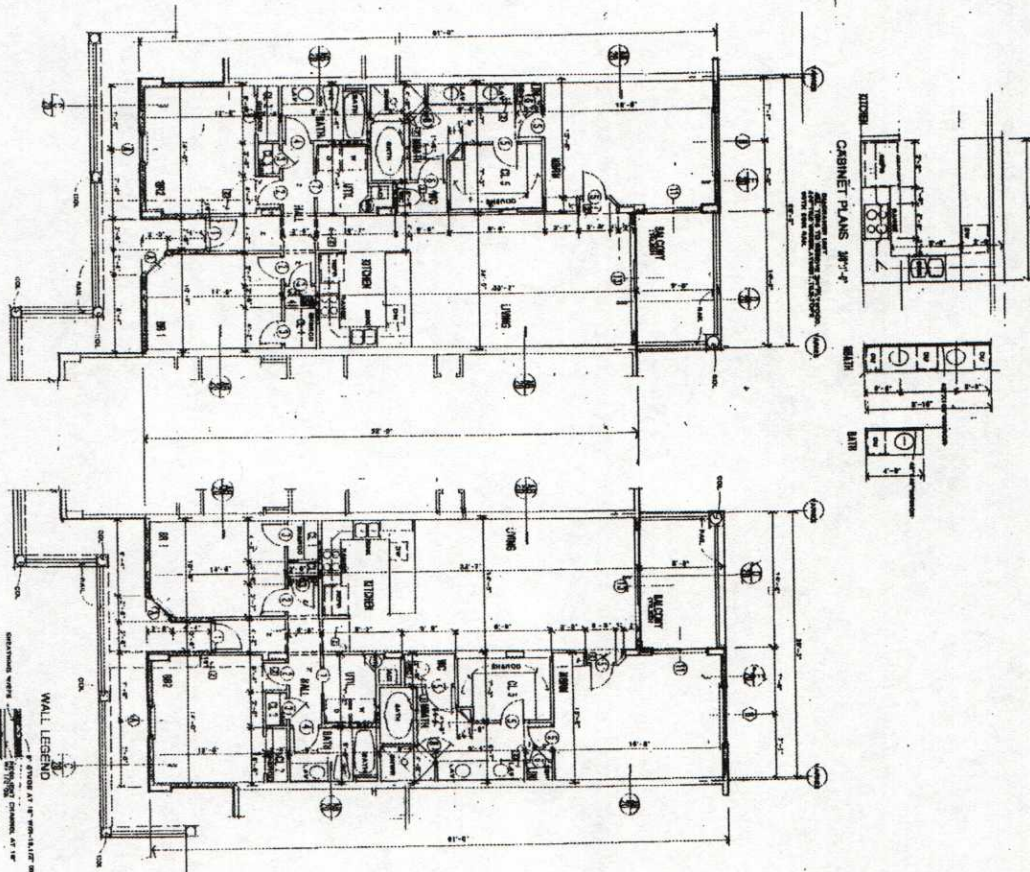
SONG HARBOR  
10/10/1961

REVISIONS  
1. 10/10/1961  
2. 10/10/1961

PL. 10/10/1961



FINISHES									
FLOORS	CARPET	BASE	WALLS	CEILINGS	CEILING HT	REMARKS			
1	1	1	1	1	1				
2	2	2	2	2	2				
3	3	3	3	3	3				
4	4	4	4	4	4				
5	5	5	5	5	5				
6	6	6	6	6	6				
7	7	7	7	7	7				
8	8	8	8	8	8				
9	9	9	9	9	9				
10	10	10	10	10	10				
11	11	11	11	11	11				
12	12	12	12	12	12				
13	13	13	13	13	13				
14	14	14	14	14	14				
15	15	15	15	15	15				
16	16	16	16	16	16				
17	17	17	17	17	17				
18	18	18	18	18	18				
19	19	19	19	19	19				
20	20	20	20	20	20				
21	21	21	21	21	21				
22	22	22	22	22	22				
23	23	23	23	23	23				
24	24	24	24	24	24				
25	25	25	25	25	25				
26	26	26	26	26	26				
27	27	27	27	27	27				
28	28	28	28	28	28				
29	29	29	29	29	29				
30	30	30	30	30	30				
31	31	31	31	31	31				
32	32	32	32	32	32				
33	33	33	33	33	33				
34	34	34	34	34	34				
35	35	35	35	35	35				
36	36	36	36	36	36				
37	37	37	37	37	37				
38	38	38	38	38	38				
39	39	39	39	39	39				
40	40	40	40	40	40				
41	41	41	41	41	41				
42	42	42	42	42	42				
43	43	43	43	43	43				
44	44	44	44	44	44				
45	45	45	45	45	45				
46	46	46	46	46	46				
47	47	47	47	47	47				
48	48	48	48	48	48				
49	49	49	49	49	49				
50	50	50	50	50	50				
51	51	51	51	51	51				
52	52	52	52	52	52				
53	53	53	53	53	53				
54	54	54	54	54	54				
55	55	55	55	55	55				
56	56	56	56	56	56				
57	57	57	57	57	57				
58	58	58	58	58	58				
59	59	59	59	59	59				
60	60	60	60	60	60				
61	61	61	61	61	61				
62	62	62	62	62	62				
63	63	63	63	63	63				
64	64	64	64	64	64				
65	65	65	65	65	65				
66	66	66	66	66	66				
67	67	67	67	67	67				
68	68	68	68	68	68				
69	69	69	69	69	69				
70	70	70	70	70	70				
71	71	71	71	71	71				
72	72	72	72	72	72				
73	73	73	73	73	73				
74	74	74	74	74	74				
75	75	75	75	75	75				
76	76	76	76	76	76				
77	77	77	77	77	77				
78	78	78	78	78	78				
79	79	79	79	79	79				
80	80	80	80	80	80				
81	81	81	81	81	81				
82	82	82	82	82	82				
83	83	83	83	83	83				
84	84	84	84	84	84				
85	85	85	85	85	85				
86	86	86	86	86	86				
87	87	87	87	87	87				
88	88	88	88	88	88				
89	89	89	89	89	89				
90	90	90	90	90	90				
91	91	91	91	91	91				
92	92	92	92	92	92				
93	93	93	93	93	93				
94	94	94	94	94	94				
95	95	95	95	95	95				
96	96	96	96	96	96				
97	97	97	97	97	97				
98	98	98	98	98	98				
99	99	99	99	99	99				
100	100	100	100	100	100				



A UNIT 10'-1" x 17'-0"

WALL LEGEND  
 1/2" THICK CONCRETE  
 1/2" THICK BRICK  
 1/2" THICK GYPSUM BOARD  
 1/2" THICK INSULATION  
 1/2" THICK FLOORING  
 1/2" THICK CEILING  
 1/2" THICK ROOFING  
 1/2" THICK FOUNDATION  
 1/2" THICK CURB  
 1/2" THICK DRIVEWAY  
 1/2" THICK PAVEMENT  
 1/2" THICK ASPHALT  
 1/2" THICK GRAVEL  
 1/2" THICK SAND  
 1/2" THICK DIRT  
 1/2" THICK ROCK  
 1/2" THICK CLAY  
 1/2" THICK SILT  
 1/2" THICK LOESS  
 1/2" THICK COAL  
 1/2" THICK OIL  
 1/2" THICK GAS  
 1/2" THICK WATER  
 1/2" THICK SEWER  
 1/2" THICK VENT  
 1/2" THICK DRAIN  
 1/2" THICK RAIN  
 1/2" THICK SWEAT  
 1/2" THICK CONDENSATE  
 1/2" THICK FUEL  
 1/2" THICK EXHAUST  
 1/2" THICK REFRIGERANT  
 1/2" THICK AIR  
 1/2" THICK VACUUM  
 1/2" THICK STEAM  
 1/2" THICK HOT WATER  
 1/2" THICK COLD WATER  
 1/2" THICK GROUNDWATER  
 1/2" THICK SURFACE WATER  
 1/2" THICK ATMOSPHERIC  
 1/2" THICK COSMIC  
 1/2" THICK SOLAR  
 1/2" THICK LUNAR  
 1/2" THICK STELLAR  
 1/2" THICK GALACTIC  
 1/2" THICK COSMIC MICROWAVE  
 1/2" THICK GRAVITATIONAL  
 1/2" THICK ELECTROMAGNETIC  
 1/2" THICK NUCLEAR  
 1/2" THICK PARTICULATE  
 1/2" THICK BIOLOGICAL  
 1/2" THICK CHEMICAL  
 1/2" THICK PHYSICAL  
 1/2" THICK METEOROLOGICAL  
 1/2" THICK CLIMATOLOGICAL  
 1/2" THICK OCEANOGRAPHICAL  
 1/2" THICK GEOGRAPHICAL  
 1/2" THICK HISTORICAL  
 1/2" THICK LINGUISTICAL  
 1/2" THICK LITERARY  
 1/2" THICK ARTS  
 1/2" THICK SCIENCE  
 1/2" THICK TECHNOLOGY  
 1/2" THICK MEDICINE  
 1/2" THICK AGRICULTURE  
 1/2" THICK FORESTRY  
 1/2" THICK FISHERY  
 1/2" THICK MINING  
 1/2" THICK MANUFACTURING  
 1/2" THICK CONSTRUCTION  
 1/2" THICK TRANSPORTATION  
 1/2" THICK COMMUNICATIONS  
 1/2" THICK ENERGY  
 1/2" THICK ENVIRONMENTAL  
 1/2" THICK SOCIAL  
 1/2" THICK BEHAVIORAL  
 1/2" THICK PSYCHOLOGICAL  
 1/2" THICK EDUCATIONAL  
 1/2" THICK LEGAL  
 1/2" THICK POLITICAL  
 1/2" THICK ECONOMIC  
 1/2" THICK RELIGIOUS  
 1/2" THICK PHILOSOPHICAL  
 1/2" THICK AESTHETIC  
 1/2" THICK ETHICAL  
 1/2" THICK MORAL  
 1/2" THICK LEGAL  
 1/2" THICK POLITICAL  
 1/2" THICK ECONOMIC  
 1/2" THICK RELIGIOUS  
 1/2" THICK PHILOSOPHICAL  
 1/2" THICK AESTHETIC  
 1/2" THICK ETHICAL  
 1/2" THICK MORAL

DATE: 10/10/04  
 JOB NO: 1004  
 REVISIONS

SNUG HARBOUR  
 CONDOMINIUMS  
 1000 GUY RIVER HIGHWAY

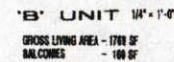
DESIGNED & DRAWN BY: ARCHITECT P.L.  
 1000 GUY RIVER HIGHWAY, P.O. BOX 1000  
 100-1000-0001 FAX 100-1000-0001

PLAN  
 1000



[illegible][illegible]

ALL INFORMATION CONTAINED HEREIN IS UNCLASSIFIED



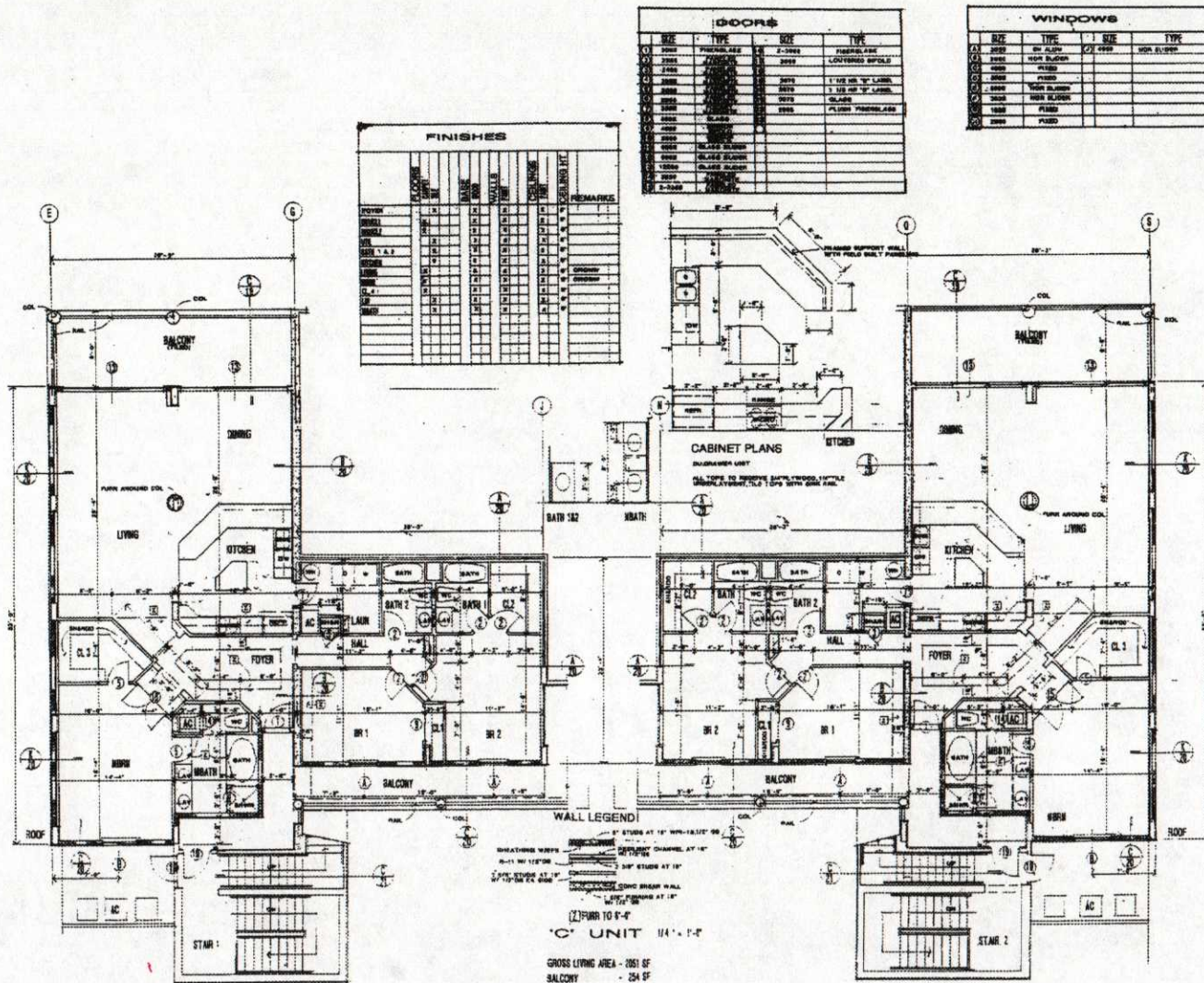
JEFFREY A. WOODFORD, ARCHITECT, P.A.  
INTE GRATES ST. PETERSBURG, FLA.  
850-432-2304 • FAX 850-432-3048

SONO HARPONS  
1415 GULF BEACH HIGHWAY

DATE MAILED  
FEB 20 1984  
VOLUME 212

**A25**  
SHEET NO.





FINISHES									
	WOOD	GLASS	PAINT	MALE	WALL	PAINT	WOOD	PAINT	REMARKS
101	N								
102	N								
103	N								
104	N								
105	N								
106	N								
107	N								
108	N								
109	N								
110	N								
111	N								
112	N								
113	N								
114	N								
115	N								
116	N								
117	N								
118	N								
119	N								
120	N								
121	N								
122	N								
123	N								
124	N								
125	N								
126	N								
127	N								
128	N								
129	N								
130	N								
131	N								
132	N								
133	N								
134	N								
135	N								
136	N								
137	N								
138	N								
139	N								
140	N								
141	N								
142	N								
143	N								
144	N								
145	N								
146	N								
147	N								
148	N								
149	N								
150	N								
151	N								
152	N								
153	N								
154	N								
155	N								
156	N								
157	N								
158	N								
159	N								
160	N								
161	N								
162	N								
163	N								
164	N								
165	N								
166	N								
167	N								
168	N								
169	N								
170	N								
171	N								
172	N								
173	N								
174	N								
175	N								
176	N								
177	N								
178	N								
179	N								
180	N								
181	N								
182	N								
183	N								
184	N								
185	N								
186	N								
187	N								
188	N								
189	N								
190	N								
191	N								
192	N								
193	N								
194	N								
195	N								
196	N								
197	N								
198	N								
199	N								
200	N								
201	N								
202	N								
203	N								
204	N								
205	N								
206	N								
207	N								
208	N								
209	N								
210	N								
211	N								
212	N								
213	N								
214	N								
215	N								
216	N								
217	N								
218	N								
219	N								
220	N								
221	N								
222	N								
223	N								
224	N								
225	N								
226	N								
227	N								
228	N								
229	N								
230	N								
231	N								
232	N								
233	N								
234	N								
235	N								
236	N								
237	N								
238	N								
239	N								
240	N								
241	N								
242	N								
243	N								
244	N								
245	N								
246	N								
247	N								
248	N								
249	N								
250	N								
251	N								
252	N								
253	N								
254	N								
255	N								
256	N								
257	N								
258	N								
259	N								
260	N								
261	N								
262	N								
263	N								
264	N								
265	N								
266	N								
267	N								
268	N								
269	N								
270	N								
271	N								
272	N								
273	N								
274	N								
275	N								
276	N								
277	N								
278	N								
279	N								
280	N								
281	N								
282	N								
283	N								
284	N								
285	N								
286	N								
287	N								
288	N								
289	N								
290	N								
291	N								
292	N								
293	N								
294	N								
295	N								
296	N								
297	N								
298	N								
299	N								
300	N								
301	N								
302	N								
303	N								
304	N								
305	N								
306	N								
307	N								
308	N								
309	N								
310	N								
311	N								
312	N								
313	N								
314	N								
315	N								
316	N								
317	N								
318	N								
319	N								
320	N								
321	N								
322	N								
323	N								
324	N								
325	N								
326	N								
327	N								
328	N								
329	N								
330	N								
331	N								
332	N								
333	N								
334	N								
335	N								
336	N								
337	N								
338	N								
339	N								
340	N								
341	N								
342	N								
343	N								
344	N								
345	N								
346	N								
347	N								
348	N								
349	N								
350	N			</					



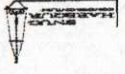
SHEET NO. 27

DATE SUBMITTAL  
JOB NO. 1001  
REVISED

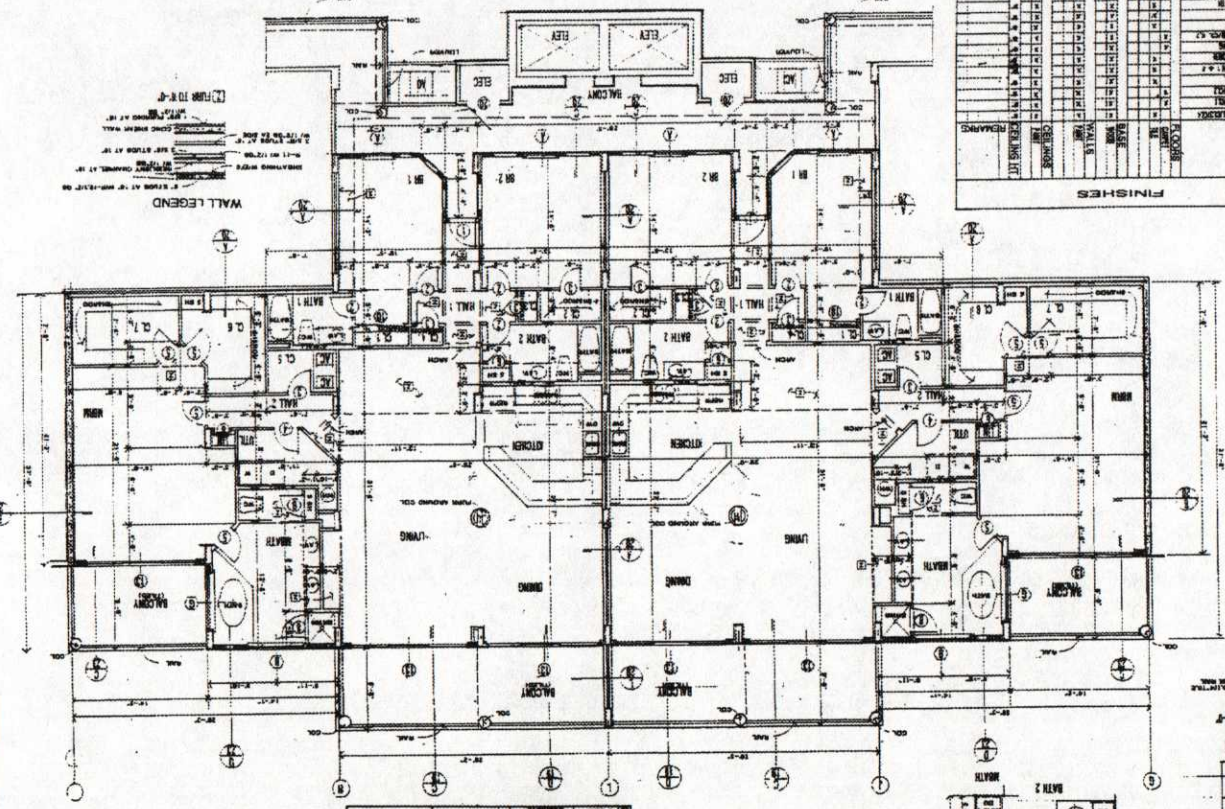
CONSTRUCTION  
NOTES

REVISIONS  
NO. DESCRIPTION  
DATE

PLAN NUMBER



D. UNIT  
GROSS LIVING AREA - 2073 SF  
BALCONIES - 201 SF



DOORS

NO.	TYPE	SIZE	QTY
1	PREHANGED	2'-0" X 6'-0"	1
2	PREHANGED	2'-0" X 6'-0"	1
3	PREHANGED	2'-0" X 6'-0"	1
4	PREHANGED	2'-0" X 6'-0"	1
5	PREHANGED	2'-0" X 6'-0"	1
6	PREHANGED	2'-0" X 6'-0"	1
7	PREHANGED	2'-0" X 6'-0"	1
8	PREHANGED	2'-0" X 6'-0"	1
9	PREHANGED	2'-0" X 6'-0"	1
10	PREHANGED	2'-0" X 6'-0"	1
11	PREHANGED	2'-0" X 6'-0"	1
12	PREHANGED	2'-0" X 6'-0"	1
13	PREHANGED	2'-0" X 6'-0"	1
14	PREHANGED	2'-0" X 6'-0"	1
15	PREHANGED	2'-0" X 6'-0"	1
16	PREHANGED	2'-0" X 6'-0"	1
17	PREHANGED	2'-0" X 6'-0"	1
18	PREHANGED	2'-0" X 6'-0"	1
19	PREHANGED	2'-0" X 6'-0"	1
20	PREHANGED	2'-0" X 6'-0"	1
21	PREHANGED	2'-0" X 6'-0"	1
22	PREHANGED	2'-0" X 6'-0"	1
23	PREHANGED	2'-0" X 6'-0"	1
24	PREHANGED	2'-0" X 6'-0"	1
25	PREHANGED	2'-0" X 6'-0"	1
26	PREHANGED	2'-0" X 6'-0"	1
27	PREHANGED	2'-0" X 6'-0"	1
28	PREHANGED	2'-0" X 6'-0"	1
29	PREHANGED	2'-0" X 6'-0"	1
30	PREHANGED	2'-0" X 6'-0"	1
31	PREHANGED	2'-0" X 6'-0"	1
32	PREHANGED	2'-0" X 6'-0"	1
33	PREHANGED	2'-0" X 6'-0"	1
34	PREHANGED	2'-0" X 6'-0"	1
35	PREHANGED	2'-0" X 6'-0"	1
36	PREHANGED	2'-0" X 6'-0"	1
37	PREHANGED	2'-0" X 6'-0"	1
38	PREHANGED	2'-0" X 6'-0"	1
39	PREHANGED	2'-0" X 6'-0"	1
40	PREHANGED	2'-0" X 6'-0"	1
41	PREHANGED	2'-0" X 6'-0"	1
42	PREHANGED	2'-0" X 6'-0"	1
43	PREHANGED	2'-0" X 6'-0"	1
44	PREHANGED	2'-0" X 6'-0"	1
45	PREHANGED	2'-0" X 6'-0"	1
46	PREHANGED	2'-0" X 6'-0"	1
47	PREHANGED	2'-0" X 6'-0"	1
48	PREHANGED	2'-0" X 6'-0"	1
49	PREHANGED	2'-0" X 6'-0"	1
50	PREHANGED	2'-0" X 6'-0"	1
51	PREHANGED	2'-0" X 6'-0"	1
52	PREHANGED	2'-0" X 6'-0"	1
53	PREHANGED	2'-0" X 6'-0"	1
54	PREHANGED	2'-0" X 6'-0"	1
55	PREHANGED	2'-0" X 6'-0"	1
56	PREHANGED	2'-0" X 6'-0"	1
57	PREHANGED	2'-0" X 6'-0"	1
58	PREHANGED	2'-0" X 6'-0"	1
59	PREHANGED	2'-0" X 6'-0"	1
60	PREHANGED	2'-0" X 6'-0"	1
61	PREHANGED	2'-0" X 6'-0"	1
62	PREHANGED	2'-0" X 6'-0"	1
63	PREHANGED	2'-0" X 6'-0"	1
64	PREHANGED	2'-0" X 6'-0"	1
65	PREHANGED	2'-0" X 6'-0"	1
66	PREHANGED	2'-0" X 6'-0"	1
67	PREHANGED	2'-0" X 6'-0"	1
68	PREHANGED	2'-0" X 6'-0"	1
69	PREHANGED	2'-0" X 6'-0"	1
70	PREHANGED	2'-0" X 6'-0"	1
71	PREHANGED	2'-0" X 6'-0"	1
72	PREHANGED	2'-0" X 6'-0"	1
73	PREHANGED	2'-0" X 6'-0"	1
74	PREHANGED	2'-0" X 6'-0"	1
75	PREHANGED	2'-0" X 6'-0"	1
76	PREHANGED	2'-0" X 6'-0"	1
77	PREHANGED	2'-0" X 6'-0"	1
78	PREHANGED	2'-0" X 6'-0"	1
79	PREHANGED	2'-0" X 6'-0"	1
80	PREHANGED	2'-0" X 6'-0"	1
81	PREHANGED	2'-0" X 6'-0"	1
82	PREHANGED	2'-0" X 6'-0"	1
83	PREHANGED	2'-0" X 6'-0"	1
84	PREHANGED	2'-0" X 6'-0"	1
85	PREHANGED	2'-0" X 6'-0"	1
86	PREHANGED	2'-0" X 6'-0"	1
87	PREHANGED	2'-0" X 6'-0"	1
88	PREHANGED	2'-0" X 6'-0"	1
89	PREHANGED	2'-0" X 6'-0"	1
90	PREHANGED	2'-0" X 6'-0"	1
91	PREHANGED	2'-0" X 6'-0"	1
92	PREHANGED	2'-0" X 6'-0"	1
93	PREHANGED	2'-0" X 6'-0"	1
94	PREHANGED	2'-0" X 6'-0"	1
95	PREHANGED	2'-0" X 6'-0"	1
96	PREHANGED	2'-0" X 6'-0"	1
97	PREHANGED	2'-0" X 6'-0"	1
98	PREHANGED	2'-0" X 6'-0"	1
99	PREHANGED	2'-0" X 6'-0"	1
100	PREHANGED	2'-0" X 6'-0"	1

WINDOWS

NO.	TYPE	SIZE	QTY
1	DOUBLE GLAZED	2'-0" X 4'-0"	1
2	DOUBLE GLAZED	2'-0" X 4'-0"	1
3	DOUBLE GLAZED	2'-0" X 4'-0"	1
4	DOUBLE GLAZED	2'-0" X 4'-0"	1
5	DOUBLE GLAZED	2'-0" X 4'-0"	1
6	DOUBLE GLAZED	2'-0" X 4'-0"	1
7	DOUBLE GLAZED	2'-0" X 4'-0"	1
8	DOUBLE GLAZED	2'-0" X 4'-0"	1
9	DOUBLE GLAZED	2'-0" X 4'-0"	1
10	DOUBLE GLAZED	2'-0" X 4'-0"	1
11	DOUBLE GLAZED	2'-0" X 4'-0"	1
12	DOUBLE GLAZED	2'-0" X 4'-0"	1
13	DOUBLE GLAZED	2'-0" X 4'-0"	1
14	DOUBLE GLAZED	2'-0" X 4'-0"	1
15	DOUBLE GLAZED	2'-0" X 4'-0"	1
16	DOUBLE GLAZED	2'-0" X 4'-0"	1
17	DOUBLE GLAZED	2'-0" X 4'-0"	1
18	DOUBLE GLAZED	2'-0" X 4'-0"	1
19	DOUBLE GLAZED	2'-0" X 4'-0"	1
20	DOUBLE GLAZED	2'-0" X 4'-0"	1
21	DOUBLE GLAZED	2'-0" X 4'-0"	1
22	DOUBLE GLAZED	2'-0" X 4'-0"	1
23	DOUBLE GLAZED	2'-0" X 4'-0"	1
24	DOUBLE GLAZED	2'-0" X 4'-0"	1
25	DOUBLE GLAZED	2'-0" X 4'-0"	1
26	DOUBLE GLAZED	2'-0" X 4'-0"	1
27	DOUBLE GLAZED	2'-0" X 4'-0"	1
28	DOUBLE GLAZED	2'-0" X 4'-0"	1
29	DOUBLE GLAZED	2'-0" X 4'-0"	1
30	DOUBLE GLAZED	2'-0" X 4'-0"	1
31	DOUBLE GLAZED	2'-0" X 4'-0"	1
32	DOUBLE GLAZED	2'-0" X 4'-0"	1
33	DOUBLE GLAZED	2'-0" X 4'-0"	1
34	DOUBLE GLAZED	2'-0" X 4'-0"	1
35	DOUBLE GLAZED	2'-0" X 4'-0"	1
36	DOUBLE GLAZED	2'-0" X 4'-0"	1
37	DOUBLE GLAZED	2'-0" X 4'-0"	1
38	DOUBLE GLAZED	2'-0" X 4'-0"	1
39	DOUBLE GLAZED	2'-0" X 4'-0"	1
40	DOUBLE GLAZED	2'-0" X 4'-0"	1
41	DOUBLE GLAZED	2'-0" X 4'-0"	1
42	DOUBLE GLAZED	2'-0" X 4'-0"	1
43	DOUBLE GLAZED	2'-0" X 4'-0"	1
44	DOUBLE GLAZED	2'-0" X 4'-0"	1
45	DOUBLE GLAZED	2'-0" X 4'-0"	1
46	DOUBLE GLAZED	2'-0" X 4'-0"	1
47	DOUBLE GLAZED	2'-0" X 4'-0"	1
48	DOUBLE GLAZED	2'-0" X 4'-0"	1
49	DOUBLE GLAZED	2'-0" X 4'-0"	1
50	DOUBLE GLAZED	2'-0" X 4'-0"	1
51	DOUBLE GLAZED	2'-0" X 4'-0"	1
52	DOUBLE GLAZED	2'-0" X 4'-0"	1
53	DOUBLE GLAZED	2'-0" X 4'-0"	1
54	DOUBLE GLAZED	2'-0" X 4'-0"	1
55	DOUBLE GLAZED	2'-0" X 4'-0"	1
56	DOUBLE GLAZED	2'-0" X 4'-0"	1
57	DOUBLE GLAZED	2'-0" X 4'-0"	1
58	DOUBLE GLAZED	2'-0" X 4'-0"	1
59	DOUBLE GLAZED	2'-0" X 4'-0"	1
60	DOUBLE GLAZED	2'-0" X 4'-0"	1
61	DOUBLE GLAZED	2'-0" X 4'-0"	1
62	DOUBLE GLAZED	2'-0" X 4'-0"	1
63	DOUBLE GLAZED	2'-0" X 4'-0"	1
64	DOUBLE GLAZED	2'-0" X 4'-0"	1
65	DOUBLE GLAZED	2'-0" X 4'-0"	1
66	DOUBLE GLAZED	2'-0" X 4'-0"	1
67	DOUBLE GLAZED	2'-0" X 4'-0"	1
68	DOUBLE GLAZED	2'-0" X 4'-0"	1
69	DOUBLE GLAZED	2'-0" X 4'-0"	1
70	DOUBLE GLAZED	2'-0" X 4'-0"	1
71	DOUBLE GLAZED	2'-0" X 4'-0"	1
72	DOUBLE GLAZED	2'-0" X 4'-0"	1
73	DOUBLE GLAZED	2'-0" X 4'-0"	1
74	DOUBLE GLAZED	2'-0" X 4'-0"	1
75	DOUBLE GLAZED	2'-0" X 4'-0"	1
76	DOUBLE GLAZED	2'-0" X 4'-0"	1
77	DOUBLE GLAZED	2'-0" X 4'-0"	1
78	DOUBLE GLAZED	2'-0" X 4'-0"	1
79	DOUBLE GLAZED	2'-0" X 4'-0"	1
80	DOUBLE GLAZED	2'-0" X 4'-0"	1
81	DOUBLE GLAZED	2'-0" X 4'-0"	1
82	DOUBLE GLAZED	2'-0" X 4'-0"	1
83	DOUBLE GLAZED	2'-0" X 4'-0"	1
84	DOUBLE GLAZED	2'-0" X 4'-0"	1
85	DOUBLE GLAZED	2'-0" X 4'-0"	1
86	DOUBLE GLAZED	2'-0" X 4'-0"	1
87	DOUBLE GLAZED	2'-0" X 4'-0"	1
88	DOUBLE GLAZED	2'-0" X 4'-0"	1
89	DOUBLE GLAZED	2'-0" X 4'-0"	1
90	DOUBLE GLAZED	2'-0" X 4'-0"	1
91	DOUBLE GLAZED	2'-0" X 4'-0"	1
92	DOUBLE GLAZED	2'-0" X 4'-0"	1
93	DOUBLE GLAZED	2'-0" X 4'-0"	1
94	DOUBLE GLAZED	2'-0" X 4'-0"	1
95	DOUBLE GLAZED	2'-0" X 4'-0"	1
96	DOUBLE GLAZED	2'-0" X 4'-0"	1
97	DOUBLE GLAZED	2'-0" X 4'-0"	1
98	DOUBLE GLAZED	2'-0" X 4'-0"	1
99	DOUBLE GLAZED	2'-0" X 4'-0"	1
100	DOUBLE GLAZED	2'-0" X 4'-0"	1

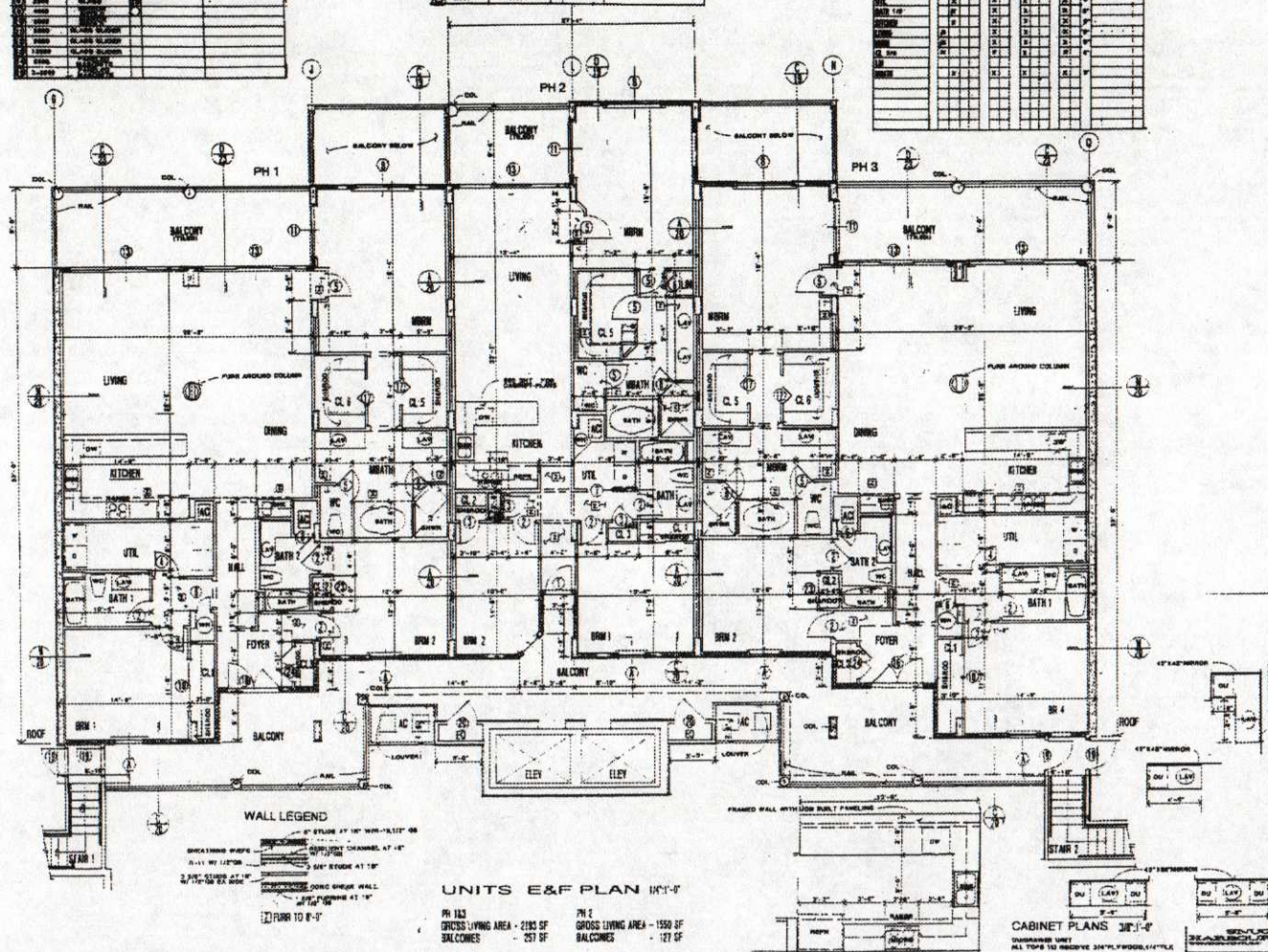
1	2	3	4	5	6	7	8	9	10	11	12	13	14	15	16	17	18	19	20	21	22	23	24	25	26	27	28	29	30	31	32	33	34	35	36	37	38	39	40	41	42	43	44	45	46	47	48	49	50	51	52	53	54	55	56	57	58	59	60	61	62	63	64	65	66	67	68	69	70	71	72	73	74	75	76	77	78	79	80	81	82	83	84	85	86	87	88	89	90	91	92	93	94	95	96	97	98	99	100
1	2	3	4	5	6	7	8	9	10	11	12	13	14	15	16	17	18	19	20	21	22	23	24	25	26	27	28	29	30	31	32	33	34	35	36	37	38	39	40	41	42	43	44	45	46	47	48	49	50	51	52	53	54	55	56	57	58	59	60	61	62	63	64	65	66	67	68	69	70	71	72	73	74	75	76	77	78	79	80	81	82	83	84	85	86	87	88	89	90	91	92	93	94	95	96	97	98	99	100
1	2	3	4	5	6	7	8	9	10	11	12	13	14	15	16	17	18	19	20	21	22	23	24	25	26	27	28	29	30	31	32	33	34	35	36	37	38	39	40	41	42	43	44	45	46	47	48	49	50	51	52	53	54	55	56	57	58	59	60	61	62	63	64	65	66	67	68	69	70	71	72	73	74	75	76	77	78	79	80	81	82	83	84	85	86	87	88	89	90	91	92	93	94	95	96	97	98	99	100
1	2	3	4	5	6	7	8	9	10	11	12	13	14	15	16	17	18	19	20	21	22	23	24	25	26	27	28	29	30	31	32	33	34	35	36	37	38	39	40	41	42	43	44	45	46	47	48	49	50	51	52	53	54	55	56	57	58	59	60	61	62	63	64	65	66	67	68	69	70	71	72	73	74	75	76	77	78	79	80	81	82	83	84	85	86	87	88	89	90	91	92	93	94	95	96	97	98	99	100
1	2	3	4	5	6	7	8	9	10	11	12	13	14	15	16	17	18	19	20	21	22	23	24	25	26	27	28	29	30	31	32	33	34	35	36	37	38	39	40	41	42	43	44	45	46	47	48	49	50	51	52	53	54	55	56	57	58	59	60	61	62	63	64	65	66	67	68	69	70	71	72	73	74	75	76	77	78	79	80	81	82	83	84	85	86	87	88	89	90	91	92	93	94	95	96	97	98	99	100
1	2	3	4	5	6	7	8	9	10	11	12	13	14	15	16	17	18	19	20	21	22	23	24	25	26	27	28	29	30	31	32	33	34	35	36	37	38	39	40	41	42	43	44	45	46	47	48	49	50	51	52	53	54	55	56	57	58	59	60	61	62	63	64	65	66	67	68	69	70	71	72	73	74	75	76	77	78	79	80	81	82	83	84	85	86	87	88	89	90	91	92	93	94	95	96	97	98	99	100
1	2	3	4	5	6	7	8	9	10	11	12	13	14	15	16	17	18	19	20	21	22	23	24	25	26	27	28	29	30	31	32	33	34	35	36	37	38	39	40	41	42	43	44	45	46	47	48	49	50	51	52	53	54	55	56	57	58	59	60	61	62	63	64	65	66	67	68	69	70	71	72	73	74	75	76	77	78	79	80	81	82	83	84	85	86	87	88	89	90	91	92	93	94	95	96	97	98	99	100
1	2	3	4	5	6	7	8	9	10	11	12	13	14	15	16	17	18	19	20	21	22	23	24	25	26	27	28	29	30	31	32	33	34	35	36	37	38	39	40	41	42	43	44	45	46	47	48	49	50	51	52	53	54	55	56	57	58	59	60	61	62	63	64	65	66	67	68	69	70	71	72	73	74	75	76	77	78	79	80	81	82	83	84	85	86	87	88	89	90	91	92	93	94	95	96	97	98	99	100
1	2	3	4	5	6	7	8	9	10	11	12	13	14	15	16	17	18	19	20	21	22	23	24	25	26	27	28	29	30	31	32	33	34	35	36	37	38	39	40	41	42	43	44	45	46	47	48	49	50	51	52	53	54	55	56	57	58	59	60	61	62	63	64	65	66	67	68	69	70	71	72	73	74	75	76	77	78	79	80	81	82	83	84	85	86	87	88	89	90	91	92	93	94	95	96	97	98	99	100
1	2	3	4	5	6	7	8	9	10	11	12	13	14	15	16	17	18	19	20	21	22	23	24	25	26	27	28	29	30	31	32	33	34	35	36	37	38	39	40	41	42	43	44	45	46	47	48	49	50	51	52	53	54	55	56	57	58	59	60	61	62	63	64	65	66	67	68	69	70	71	72	73	74	75	76	77	78	79	80	81	82	83	84	85	86	87	88	89	90	91	92	93	94	95	96	97	98	99	100
1	2	3	4	5	6	7	8	9	10	11	12	13	14	15	16	17	18	19	20	21	22	23	24	25	26	27	28	29	30	31	32	33	34	35	36	37	38	39	40	41	42	43	44	45	46	47	48	49	50	51	52	53	54	55	56	57	58	59	60	61	62	63	64	65	66	67	68	69	70	71	72	73	74	75	76	77	78	79	80	81	82	83	84	85	86	87	88	89	90	91	92	93	94	95	96	97	98	99	100
1	2	3	4	5	6	7	8	9	10	11	12	13	14	15	16	17	18	19	20	21	22	23	24	25	26	27	28	29	30	31	32	33	34	35	36	37	38	39	40	41	42	43	44	45	46	47	48	49	50	51	52	53	54	55	56	57	58	59	60	61	62	63	64	65	66	67	68	69	70	71	72	73	74	75	76	77	78	79	80	81	82	83	84	85	86	87	88	89	90	91	92	93	94	95	96	97	98	99	100
1	2	3	4	5	6	7	8	9	10	11	12	13	14	15	16	17	18	19	20	21	22	23	24	25	26	27	28	29	30	31	32	33	34	35	36	37	38	39	40	41	42	43	44	45	46	47	48	49	50	51	52	53	54	55	56	57	58	59	60	61	62	63	64	65	66	67	68	69	70	71	72	73	74	75	76	77	78	79	80	81	82	83	84	85	86	87	88	89	90	91	92	93	94	95	96	97	98	99	100
1	2	3	4	5	6	7	8	9	10	11	12	13	14	15	16	17	18	19	20	21	22	23	24	25	26	27	28	29	30	31	32	33	34	35	36	37	38	39	40	41	42	43	44	45	46	47	48	49	50	51	52	53	54	55	56	57	58	59	60	61	62	63	64	65	66	67	68	69	70	71	72	73	74	75	76	77	78	79	80	81	82	83	84	85	86	87	88	89	90	91	92	93	94	95	96	97	98	99	100
1	2	3	4	5	6	7	8	9	10	11	12	13	14	15	16	17	18	19	20	21	22	23	24	25	26	27	28	29	30	31	32	33	34	35	36	37	38	39	40	41	42	43	44	45	46	47	48	49	50	51	52	53	54	55	56	57	58	59	60	61	62	63	64	65	66	67	68	69	70	71	72	73	74	75	76	77	78	79	80	81	82	83	84	85	86	87	88	89	90	91	92	93	94	95	96	97	98	99	100
1	2	3	4	5	6	7	8	9	10	11	12	13	14	15	16	17	18	19	20	21	22	23	24	25	26	27	28	29	30	31	32	33	34	35	36	37	38	39	40	41	42	43	44	45	46	47	48	49	50																																																		



DOORS			
NO.	TYPE	SIZE	TYPE
1-100	SLIP DOOR	3'-0" X 7'-0"	SLIP DOOR
1-101	SLIP DOOR	3'-0" X 7'-0"	SLIP DOOR
1-102	SLIP DOOR	3'-0" X 7'-0"	SLIP DOOR
1-103	SLIP DOOR	3'-0" X 7'-0"	SLIP DOOR
1-104	SLIP DOOR	3'-0" X 7'-0"	SLIP DOOR
1-105	SLIP DOOR	3'-0" X 7'-0"	SLIP DOOR
1-106	SLIP DOOR	3'-0" X 7'-0"	SLIP DOOR
1-107	SLIP DOOR	3'-0" X 7'-0"	SLIP DOOR
1-108	SLIP DOOR	3'-0" X 7'-0"	SLIP DOOR
1-109	SLIP DOOR	3'-0" X 7'-0"	SLIP DOOR
1-110	SLIP DOOR	3'-0" X 7'-0"	SLIP DOOR
1-111	SLIP DOOR	3'-0" X 7'-0"	SLIP DOOR
1-112	SLIP DOOR	3'-0" X 7'-0"	SLIP DOOR
1-113	SLIP DOOR	3'-0" X 7'-0"	SLIP DOOR
1-114	SLIP DOOR	3'-0" X 7'-0"	SLIP DOOR
1-115	SLIP DOOR	3'-0" X 7'-0"	SLIP DOOR
1-116	SLIP DOOR	3'-0" X 7'-0"	SLIP DOOR
1-117	SLIP DOOR	3'-0" X 7'-0"	SLIP DOOR
1-118	SLIP DOOR	3'-0" X 7'-0"	SLIP DOOR
1-119	SLIP DOOR	3'-0" X 7'-0"	SLIP DOOR
1-120	SLIP DOOR	3'-0" X 7'-0"	SLIP DOOR

WINDOWS			
NO.	TYPE	SIZE	TYPE
1-121	SLIP WINDOW	3'-0" X 7'-0"	SLIP WINDOW
1-122	SLIP WINDOW	3'-0" X 7'-0"	SLIP WINDOW
1-123	SLIP WINDOW	3'-0" X 7'-0"	SLIP WINDOW
1-124	SLIP WINDOW	3'-0" X 7'-0"	SLIP WINDOW
1-125	SLIP WINDOW	3'-0" X 7'-0"	SLIP WINDOW
1-126	SLIP WINDOW	3'-0" X 7'-0"	SLIP WINDOW
1-127	SLIP WINDOW	3'-0" X 7'-0"	SLIP WINDOW
1-128	SLIP WINDOW	3'-0" X 7'-0"	SLIP WINDOW
1-129	SLIP WINDOW	3'-0" X 7'-0"	SLIP WINDOW
1-130	SLIP WINDOW	3'-0" X 7'-0"	SLIP WINDOW
1-131	SLIP WINDOW	3'-0" X 7'-0"	SLIP WINDOW
1-132	SLIP WINDOW	3'-0" X 7'-0"	SLIP WINDOW
1-133	SLIP WINDOW	3'-0" X 7'-0"	SLIP WINDOW
1-134	SLIP WINDOW	3'-0" X 7'-0"	SLIP WINDOW
1-135	SLIP WINDOW	3'-0" X 7'-0"	SLIP WINDOW
1-136	SLIP WINDOW	3'-0" X 7'-0"	SLIP WINDOW
1-137	SLIP WINDOW	3'-0" X 7'-0"	SLIP WINDOW
1-138	SLIP WINDOW	3'-0" X 7'-0"	SLIP WINDOW
1-139	SLIP WINDOW	3'-0" X 7'-0"	SLIP WINDOW
1-140	SLIP WINDOW	3'-0" X 7'-0"	SLIP WINDOW

FINISHES			
NO.	TYPE	SIZE	TYPE
1-141	SLIP FINISH	3'-0" X 7'-0"	SLIP FINISH
1-142	SLIP FINISH	3'-0" X 7'-0"	SLIP FINISH
1-143	SLIP FINISH	3'-0" X 7'-0"	SLIP FINISH
1-144	SLIP FINISH	3'-0" X 7'-0"	SLIP FINISH
1-145	SLIP FINISH	3'-0" X 7'-0"	SLIP FINISH
1-146	SLIP FINISH	3'-0" X 7'-0"	SLIP FINISH
1-147	SLIP FINISH	3'-0" X 7'-0"	SLIP FINISH
1-148	SLIP FINISH	3'-0" X 7'-0"	SLIP FINISH
1-149	SLIP FINISH	3'-0" X 7'-0"	SLIP FINISH
1-150	SLIP FINISH	3'-0" X 7'-0"	SLIP FINISH
1-151	SLIP FINISH	3'-0" X 7'-0"	SLIP FINISH
1-152	SLIP FINISH	3'-0" X 7'-0"	SLIP FINISH
1-153	SLIP FINISH	3'-0" X 7'-0"	SLIP FINISH
1-154	SLIP FINISH	3'-0" X 7'-0"	SLIP FINISH
1-155	SLIP FINISH	3'-0" X 7'-0"	SLIP FINISH
1-156	SLIP FINISH	3'-0" X 7'-0"	SLIP FINISH
1-157	SLIP FINISH	3'-0" X 7'-0"	SLIP FINISH
1-158	SLIP FINISH	3'-0" X 7'-0"	SLIP FINISH
1-159	SLIP FINISH	3'-0" X 7'-0"	SLIP FINISH
1-160	SLIP FINISH	3'-0" X 7'-0"	SLIP FINISH



FLA REGION

OFFICIAL ARCHITECTURAL RECORD ALL  
DATE CHANGED BY  
DATE 12-20-2001

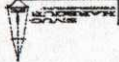
SONS OF HARBOR  
1000 1000 1000

DATE 12-20-2001  
AND ALL DATA  
REVIEWED

A28  
SHEET NO.



SHEET NO.  
A30



DATE: 10/10/00  
BY: J. H. HARRIS  
REVISED: 10/10/00

SONG HARRIS  
ARCHITECTS  
1000 10TH AVENUE  
SUITE 100  
DENVER, CO 80202

PROJECT: 1000 10TH AVENUE  
1000 10TH AVENUE  
1000 10TH AVENUE  
1000 10TH AVENUE

1000 10TH AVENUE

NO.	DESCRIPTION	SIZE
1	FIXED - IMPACT GLAZING	10'-0" x 10'-0"
2	FIXED - IMPACT GLAZING	10'-0" x 10'-0"
3	FIXED - IMPACT GLAZING	10'-0" x 10'-0"
4	FIXED - IMPACT GLAZING	10'-0" x 10'-0"
5	FIXED - IMPACT GLAZING	10'-0" x 10'-0"
6	FIXED - IMPACT GLAZING	10'-0" x 10'-0"
7	FIXED - IMPACT GLAZING	10'-0" x 10'-0"
8	FIXED - IMPACT GLAZING	10'-0" x 10'-0"
9	FIXED - IMPACT GLAZING	10'-0" x 10'-0"
10	FIXED - IMPACT GLAZING	10'-0" x 10'-0"

NO.	DESCRIPTION	SIZE
1	FIXED - IMPACT GLAZING	10'-0" x 10'-0"
2	FIXED - IMPACT GLAZING	10'-0" x 10'-0"
3	FIXED - IMPACT GLAZING	10'-0" x 10'-0"
4	FIXED - IMPACT GLAZING	10'-0" x 10'-0"
5	FIXED - IMPACT GLAZING	10'-0" x 10'-0"
6	FIXED - IMPACT GLAZING	10'-0" x 10'-0"
7	FIXED - IMPACT GLAZING	10'-0" x 10'-0"
8	FIXED - IMPACT GLAZING	10'-0" x 10'-0"
9	FIXED - IMPACT GLAZING	10'-0" x 10'-0"
10	FIXED - IMPACT GLAZING	10'-0" x 10'-0"

